

FIFTH SUNDAY AFTER PENTECOST

THE MAN OF FAITH sees all the problems of today as opportunities for his faith. These problems are basically religious matters. The question we must ask is this: Does our faith regulate our lives? - or do our lives regulate our faith? Do we think of our lives as the expression of our faith, or contrariwise, do we distort or mutilate our faith by our lives? Can our neighbor recognize in our words, our attitudes, our actions, the mind of Christ? (Excerpt from Archbishop's letter, full text in Clarion).

ST. ANGELA LADIES AUXILIARY (SALA) will have its monthly meeting on Thursday, July 11th, at 8:00 pm in the annex building. Guest speaker will be Father Lipps who will discuss "Do You Know What Is Going On In Your Neighborhood?" Sister Elizabeth will be at the meeting to answer any questions on school uniforms. Enclosed you will find a newsletter describing SALA.

SCHOOL NEWS: Summer reading guides for those children entering the fourth grade in September may be picked up at the school office on Monday, July 8 (9:30 am to 12 noon) or on Sunday July 14, (9:30 am to 12 noon).

PARISH PICNIC: Plan now to join with your friends, neighbors, and fellow parishioners for a full day of fun on Sunday, July 28, at the Metairie Playground. This is a parish wide activity sponsored by the Block Couple System. All Area Coordinators and Block Couples are urged to begin inviting their families. There will be games and activities for the whole family. Be sure to register for the free entrance prize.

MIC'S YOUTH CENTER is open every Tuesday and Thurs. from 7 to 10:30 pm in the annex. Here the teenagers of the parish can get to know one another and recreate together. The parents are invited to come around and see the wonderful facilities that are available.

ITEMS OF INTEREST: THE ATTENDANCE AT MASS LAST SUNDAY WAS 4074 . . . 1770 RECEIVED COMMUNION . . . ENVELOPES WERE \$ 4130.00 . . . COVER OF MESSAGE IS TEENAGERS USING 'YOUTH CENTER' . . . THIS SUNDAY, FATHER HENNESSY, A REDEMPTORIST PRIEST, WILL SPEAK AT ALL THE MASSES ON THE CATHOLIC PRESS. HE WILL PROMOTE SUBSCRIPTIONS TO THE LIGUORIAN MAGAZINE . . . URGE ALL FAMILIES TO USE THEIR WEEKLY ENVELOPES REGULARLY . . . WISH TO THANK THE FAMILIES WHO HAVE BEEN RECEIVING THE PARISH PRIESTS SO CORDIALLY . . . YOUR PARISH PRIESTS VISIT THE HOSPITALS AT LEAST TWICE A WEEK, PLEASE LET US KNOW WHEN YOUR SICK ARE IN THE HOSPITAL . . . CONGRATULATIONS TO ALL PARISHIONERS WHO COME TO MASS REGULARLY AND ON TIME, IT SHOWS TRUE LOVE FOR GOD . . . MANY OF OUR PARISHIONERS HAVE NOT SEEN FIT TO GIVE GOD AT LEAST ONE HOUR A WEEK. HOW CAN ONE EXPECT TO SPEND AN ETERNITY WITH GOD, WHEN HE REFUSES TO COMMUNE WITH HIM HERE ON EARTH?

AS WE SEE IT: THE PROVERBIAL HANDWRITING SEEMS TO BE CLEARLY ETCHED ON THE WALL FOR NON-PUBLIC EDUCATION. IN BATON ROUGE, HOUSE BILL 1479 WENT DOWN IN DEFEAT IT WAS A DIRECT SLAP AT WHAT OUR SCHOOLS ARE DOING FOR THE COMMUNITY. AND YET WE TAKE IT STANDING UP. TUITION CONTINUES TO RISE. THE NUNS AND LAY TEACHERS CONTINUE TO MAKE EXTREME SACRIFICES. OUR SCHOOLS CONTINUE TO RUN INTO STAGGERING DEFICITS. THE WHOLE SYSTEM IS BEING CHALLENGED.

THE FOLLOWING HOUSE MEMBERS FROM JEFFERSON PARISH VOTED AGAINST THIS BILL: LEON SONIAT, GEORGE BLUE, JAMES BEESON, KENNETH LEITHMAN, THOMAS WARD. IF YOU ARE DISAPPOINTED IN THE WAY THEY REPRESENTED YOU, TELL THEM SO.

HANK LAURICELLA WAS THE ONLY MEMBER OF THE JEFFERSON DELEGATION TO VOTE FAVORABLY. PERHAPS YOU WOULD LIKE TO THANK HIM FOR HIS SUPPORT.

BAPTISMS THIS WEEK:

ROBYN ANDREE INDOVINA

BANNS OF MATRIMONY:

DONALD JOSEPH BRISOLARA & EMILE GENE WITTMANN (1 ST)
GORDON FREDERICK HANSEN & MARILYN ANN ROSATO (1 ST)

SATURDAY ALTAR LADIES

MARIE POCHE
RUTH HOOD
JUANITA HENRIES

MARGARET BALLARD
ROSE COLLURA

THELMA BOECKELMAN
ROSALIE CLARET
ROSEMARY SMITH

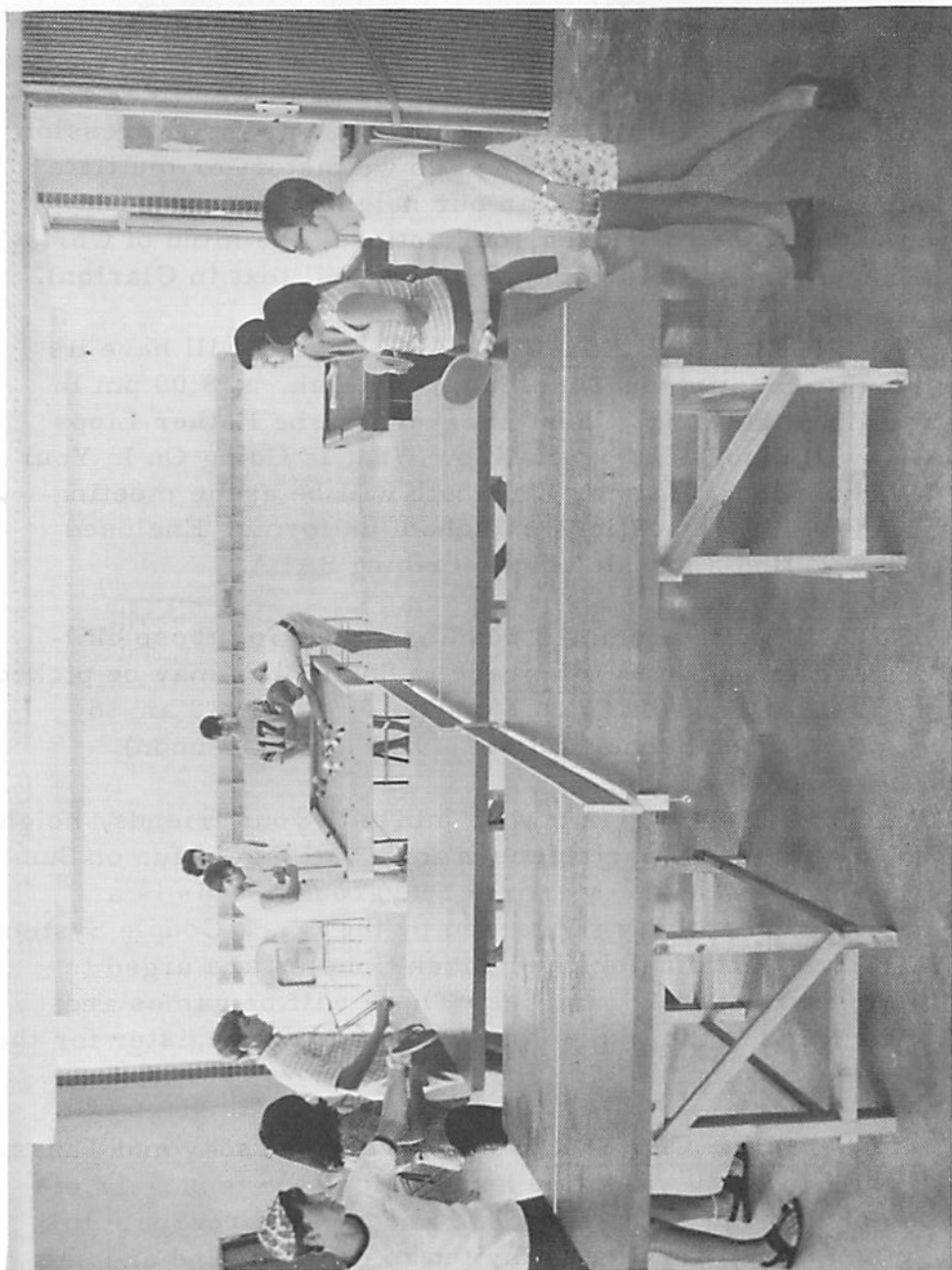
THOUGHT FOR TODAY:

THE DIFFERENCE BETWEEN OUR DAYS IS THE DIFFERENCE WE PUT INTO THEM.



St. Angela Merici

Parish Message



ST. ANGELA MERICI CHURCH

Pastor: Father Joseph Calato
Assistants: Father Jerry Dabria
Father Frank Lipps

Rectory: 900 Beverly Garden Drive
835-0324

Convent: 828 Melody Drive
834-7628

School: 835 Melody Drive
835-8547
Staffed by Ursuline Nuns

Sunday Masses

7:00 A.M.	8:30 A.M.
9:45 A.M.	11:00 A.M.
12:15 P.M.	5:30 P.M.

Nursery service every Sunday during
9:45 and 11:00 A.M. Masses in school
building.

Weekday Masses

6:30 A.M. & 8:30 A.M.

Our Lady of Perpetual Help Novena

Tuesday 7:30 P.M.

Holy Days of Obligation

6:00 A.M.	7:15 A.M.
8:30 A.M.	9:45 A.M.
6:00 P.M.	7:15 P.M.

Confessions

Saturday: 5:00 - 6:00 P.M.
7:00 - 8:00 P.M.

Thursday before First Friday
5:00 - 6:00 P.M.
7:00 - 8:00 P.M.

Baptisms:

Arrangements should be made prior to the
Ceremony. All information should be care-
fully phoned in advance.

Only practicing Catholics can be sponsors.

PARISH MESSAGE

St. Angela Merici Church
900 Beverly Garden Dr.
Metairie, La. 70002

Second Class Postage
Paid at
Metairie, La. 70002

Postmaster: If undeliverable
Form 3579 Requested

Subscription \$1.00

S. A. L. A. NEWSLETTER

* * * * *

Greetings to all SALA Members and Friends!

The Officers and Board members of St. Angela Ladies Auxiliary hope our ladies of the parish are having a pleasant summer vacation and enjoying a respite from schedules. However, we want you to know that we are thinking of you, and planning interesting programs for the months ahead.

This "Newsletter" is a new idea, and we hope you will enjoy it. We plan to attach it to the Parish Message at regular intervals, giving you the news of SALA. In this way we hope to shorten the reports at our meetings. SALA is a very active organization and there's always a lot going on, but we don't want to tire out our friends at every meeting! So, the newsletter will report on all committees, give you names to call if something interests you, and be a handy reminder of dates and places. Because it is a new idea, we welcome all suggestions from our readers.

To all our new parishioners and ladies who have not joined us before: How about coming to one of our summer meetings? The group is smaller so you'll get a chance to meet each other, and the program is informal. The next meeting will be Thursday, July 11 at 8 pm in the school annex and Father Frank Lipps will be our guest.

To all our school mothers: A reminder that orders for the school uniforms must be placed by July 15th. If you need any help in this, we will have the information at the meeting.

Ladies: What is the easiest thing to iron - Handkerchiefs - right? Well, that is "just about" what caring for the Altar linen amounts to - washing and ironing small squares of cloth. We need some help during the summer, so please call Ruth LeBourgeois at 833-3009 and tell her you'll do some!

SEE YOU ALL THURSDAY!

SIXTH SUNDAY AFTER PENTECOST

YOU CAN TAKE A JET AROUND THE WORLD but you can't take one to heaven. Getting to heaven requires a certain way of life. It means keeping the ten commandments of Almighty God. - the easy ones as well as the difficult ones. It involves a standard of life that has been planned and announced by Jesus Christ. You hear about this standard of life each Sunday you come to Mass. Normally you will not read about it in the newspaper nor see it described on TV. In the liturgy of the Mass and on the pages of the Holy Bible, the christian way of life is clearly outlined. So you see, even if you don't plan to take a jet; you can still get to heaven.

ST. ANGELA'MEN'S ASSOCIATION (SAMA) will have its monthly meeting next Thursday, July 18, at 8:00 pm in the annex. All men of the parish are invited to attend. The summer schedule is that of a social nature with a very brief business meeting followed by ping-pong, shooting pool and the "bull" over a can of beer. Especially invited are the new parishioners and those who have never attended a meeting.

THE PARISH PICNIC will be held on Sunday, July 28, at the Metairie Playground. The entire parish is invited. This parish-wide activity is sponsored by the Block Couple System of the parish. In the past two years over two thousand parishioners have attended each picnic. It will be an occasion for you to meet your fellow parishioners on an informal and social basis. There will be games for the adults and children with prizes. There is no admission fee, just bring your own lunch and drinks. A FIELD MASS will be celebrated on the football field at 5:00 pm. The picnic will start late Sunday morning. The entire Metairie Playground has been reserved for our picnic. We urge all Block Couples to begin inviting the families on their block. We also wish to invite all of our non-catholic friends who live within the parish.

ITEMS OF INTEREST: THE ATTENDANCE AT MASS LAST SUNDAY WAS 4211 . . . 1691 RECEIVED COMMUNION . . . ENVELOPES WERE \$ 4309.00 . . . ANYONE INTERESTED IN ATTENDING CLASSES IN HIGH SCHOOL FRESHMAN ALGEBRA AT ST. ANGELA'S SHOULD CONTACT OCTAVE HYMEL AT 834-7550. CLASSES WILL START ON JULY 18 IN THE ANNEX TWO NIGHTS A WEEK . . . WISH TO CONGRATULATE THE PARISHIONERS WHO CONTINUE TO COME ON TIME FOR MASS AND DO NOT LEAVE BEFORE THE FINAL HYMN HAS BEEN SUNG . . . THE M.I.C. YOUTH GROUP WILL HAVE A PICNIC ON SATURDAY, JULY 13, FROM 6:30 TO 10:30 PM, AT THE OLD BEACH AT LAKE PONTCHARTRAIN . . . FISCAL YEAR IN THE ARCHDIOCESE JUST ENDED ON JUNE 29, IN THE NEAR FUTURE A RESUME OF ST. ANGELA'S ANNUAL REPORT WILL BE PUBLISHED AND FORWARDED TO ALL PARISHIONERS.

AS WE SEE IT: SUMMER TIME IS NOT A TIME FOR VACATION FROM CHURCH. WONDER WHERE ALL OF OUR CHILDREN ARE FOR AT LEAST ONE WEEK DAY MASS AT 8:30 AM. DURING THE SCHOOL YEAR, WE TRY TO TRAIN THE CHILDREN AND NOW DURING THE SUMMER WE RELY ON OUR PARENTS. SO PARENTS, PLEASE DO YOUR PART. YOU KNOW THE CHURCH AND THE FAMILY FORM A TEAM. EACH HAS ITS OWN ROLE TO PLAY. MOST PEOPLE ARE IMMEDIATELY CRITICAL WHEN THEY SEE THE HUMAN WEAKNESS OF THE PRIESTS AND RELIGIOUS. OFTEN THESE SAME PERSONS ARE GROSSLY NEGLIGENT IN THEIR OWN RESPONSIBILITIES. SO PARENTS, WE URGE YOU TO CONTINUE WHAT WE HAVE BEGUN DURING THE SCHOOL YEAR. BRING YOUR CHILDREN TO AT LEAST ONE MASS DURING THE WEEK.

BAPTISMS THIS WEEK:

JEFFREY LEE SEALE	JEANNE MICHELE GUILBAULT
CYRIL ANTHONY MORELLO	LLOYD BRIAN HASENKAMPF

BANNS OF MATRIMONY:

CHRISTIAN SAILOR MCAULIFFE	&	MARILYN ANN BURCHARDT	(1 ST)
DONALD JOSEPH BRISOLARA	&	EMILE GENE WITTMANN	(2 ND)
GORDON FREDERICK HANSEN	&	MARILYN ANN ROSATO	(2 ND)

SATURDAY ALTAR LADIES

RITA CARRONNE	MARINA JACOBS	ADELE GRESSE
RITA HAMILTON	MARION REMY	GLORIA FRANCES
INEZ MAXWELL	CAROL POLLARD	SANDY POLLOCK

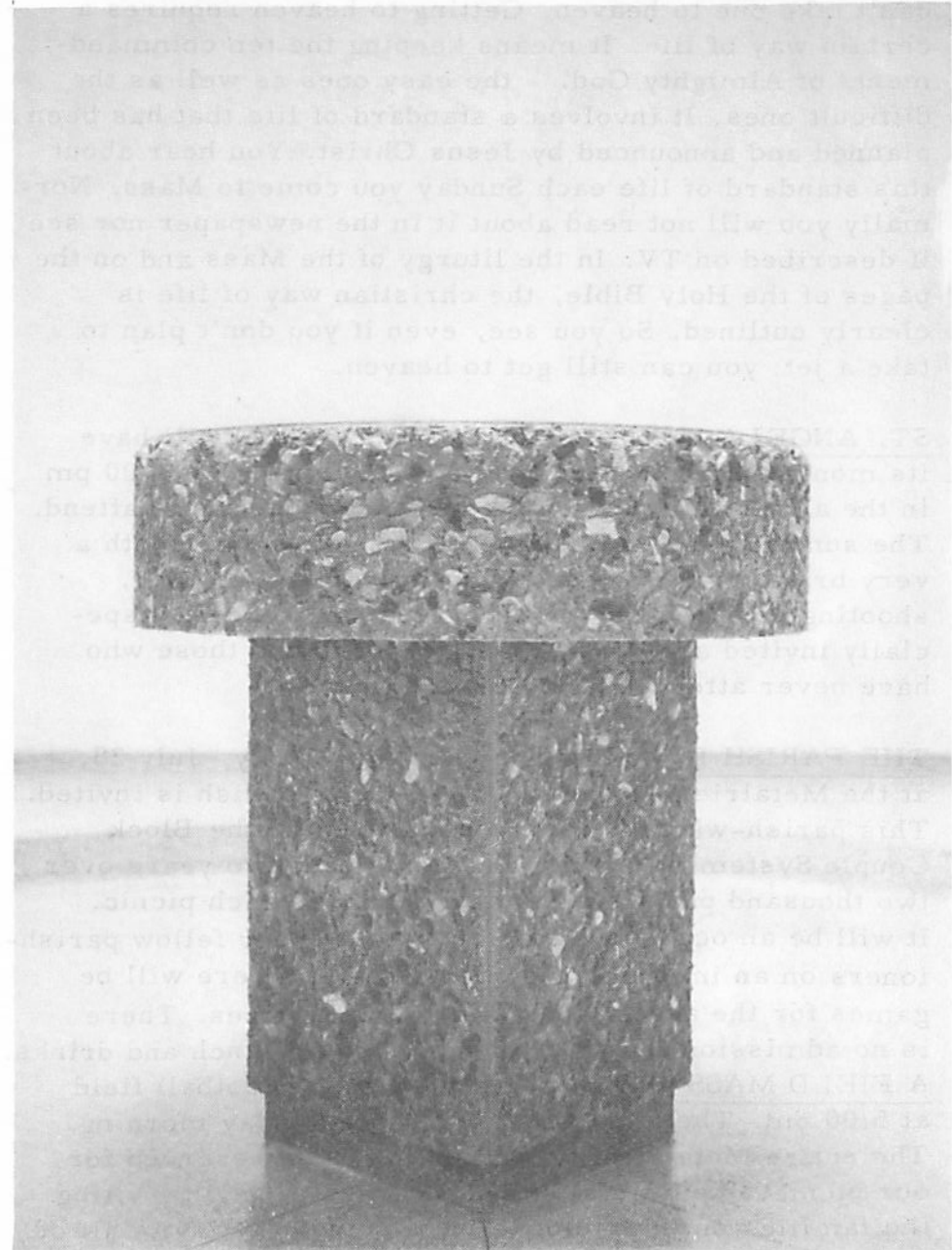
THOUGHT FOR TODAY:

MOST OF US DO NOT KNOW WHAT WE WANT BUT IT'S SOMETHING DIFFERENT THAN WHAT WE HAVE NOW.



St. Angela Merici

Parish Message



ST. ANGELA MERICI CHURCH

Pastor: Father Joseph Calato
Assistants: Father Jerry Dabria
Father Frank Lipps

Rectory: 900 Beverly Garden Drive
835-0324

Convent: 828 Melody Drive
834-7628

School: 835 Melody Drive
835-8547
Staffed by Ursuline Nuns

Sunday Masses

7:00 A.M.	8:30 A.M.
9:45 A.M.	11:00 A.M.
12:15 P.M.	5:30 P.M.

Nursery service every Sunday during
9:45 and 11:00 A.M. Masses in school
building.

Weekday Masses

6:30 A.M. & 8:30 A.M.

Our Lady of Perpetual Help Novena

Tuesday 7:30 P.M.

Holy Days of Obligation

6:00 A.M.	7:15 A.M.
8:30 A.M.	9:45 A.M.
6:00 P.M.	7:15 P.M.

Confessions

Saturday: 5:00 – 6:00 P.M.
7:00 – 8:00 P.M.

Thursday before First Friday
5:00 – 6:00 P.M.
7:00 – 8:00 P.M.

Baptisms:

Arrangements should be made prior to the
Ceremony. All information should be care-
fully phoned in advance.

Only practicing Catholics can be sponsors.

PARISH MESSAGE

St. Angela Merici Church
900 Beverly Garden Dr.
Metairie, La. 70002

Second Class Postage
Paid at
Metairie, La. 70002

Postmaster: If undeliverable
Form 3579 Requested

Subscription \$1.00

SEVENTH SUNDAY AFTER PENTECOST

WE CAN LEARN A GOOD LESSON ABOUT LIFE from fruit trees. A good and healthy tree produces delicious fruit. A warped and withered tree can only produce knotty and deformed fruit. Rather simple when you think about it. Also logical. Something like trying to get blood out of a turnip. Or like getting water out of an empty glass. It's really impossible. And so with us as persons. If we don't have it on the inside, our projection of self will be phony and most artificial. We might think that others are fooled but sooner or later they find out and know us for what we are. So why not graft on to your tree of life one of the most important of the "inside" qualities ... **SINCERITY!**

BE READY FOR SUNDAY, JULY 28. St. Angela Parish Picnic will be held at the Metairie Playground. The entire playground is reserved for us. It's an all day of fun and games for all. Be sure to register for the entrance prize. All you need do is sign your name. Each family brings its own lunch and drinks. There will be an **EVENING MASS** at 5:00 pm on the football field. Urge all Block Couples to invite the families on their block. All parishioners and their relatives and friends are invited. Why not make this a family reunion for you and yours?

THE ACCELERATED EIGHTH GRADE CLASS will complete their course of studies on July 25th. Certificates of promotion will be presented at the 8:30 am Mass on Friday, July 26. Coffee and donuts will be served to the class and their families after the Mass.

SEMI-ANNUAL STATEMENTS OF CONTRIBUTIONS to the Church were mailed recently. If there are any mistakes please contact the rectory and corrections will be made. Thanks and congratulations to the families who are supporting the Church. God will bless you. Through your gift God comes to you and to others.

ITEMS OF INTEREST: THE ATTENDANCE AT MASS LAST SUNDAY WAS 4218 . . . 1689 RECEIVED COMMUNION . . . ENVELOPES WERE \$ 3755.00 . . . SALE OF USED SCHOOL UNIFORMS AT NEXT SALA MEETING ON THUR., AUGUST 1 ST. PLEASE PIN AN UNSEALED ENVELOPE TO EACH UNIFORM ARTICLE TO BE SOLD. WRITE NAME, PHONE NUMBER AND AMOUNT EXPECTED ON THE ENVELOPE . . . IT WOULD HELP OUR MONEY COUNTERS IF YOU PUT THE AMOUNT ON YOUR CHURCH ENVELOPE . . . M.I.C. YOUTH GROUP WILL HAVE A DANCE IN THE ANNEX ON SATURDAY, JULY 20 FROM 8 PM TO 11:30 PM. ON SATURDAY, JULY 27, ANOTHER DANCE ABOARD THE MARK TWAIN FROM 8PM TO 11 PM . . . WISH TO REMIND PARENTS WHO ATTEND THE 9:45 AND 11:00 AM MASSES ON SUNDAY OF THE FREE NURSERY IN THE ANNEX, THIS IS A SERVICE THAT HELPS PARENTS AND THE ENTIRE CONGREGATION . . . ANY PARISHIONER INTERESTED IN PURCHASING A COIN OPERATED COKE MACHINE, THE ONE IN OUR ANNEX, SHOULD CONTACT THE RECTORY.

AS WE SEE IT: EVERY ONE TALKS ABOUT PRODUCTIVITY, PROFITS, EFFICIENCY, SOUND MANAGEMENT, INCREASE IN WAGES, THE MARKET, ETC., ETC. EVERY FAMILY CONSTANTLY CONSIDERS THE NEEDS OF THE HOME, THE EDUCATION OF THE CHILDREN, HOW MUCH TIME IS SPENT FOR GOD? DIRECTLY SPENT IN MINUTES AND HOURS PER WEEK IN WORSHIP AND THANKSGIVING. OR MORE POINTEDLY, WHEN WAS THE LAST TIME YOU CAME TO MASS AND RECEIVED THE SACRAMENTS? A PERSON CAN BE VERY MUCH ALIVE TO THE THINGS OF THIS WORLD, BUT MOST DEAD TO THE THINGS OF GOD.

BAPTISMS THIS WEEK:

SHAWN PATRICK MC GOVERN	LAUREL ANN SPRABERRY
SHERRI MARIE STOLTZ	KELLIE KATHLEEN WALKER

BANNS OF MATRIMONY:

DERISE MOREL	&	ANN GAIL OLIVERE	(1 ST)
CHRISTIAN SAILOR MC AULIFFE	&	MARILYN ANN BURCHARDT	(2 ND)
DONALD JOSEPH BRISOLARA	&	EMILE GENE WITTMANN	(3 RD)
GORDON FREDERICK HANSEN	&	MARILYN ANN ROSATO	(3 RD)

IN YOUR CHARITY PLEASE PRAY FOR THE SOULS OF MRS. CELIA DIECIDUE AND MRS. JOSEPHINE LEE WHO DIED THIS WEEK.

SATURDAY ALTAR LADIES

PATTY MOUNT	SHIRLEY CODIFER	PAT DANIEL
MARCELLE PFISTER	ADELE MEEHAN	MARY ANN LANDRY
LORRAINE DANIEL		JO SMITH

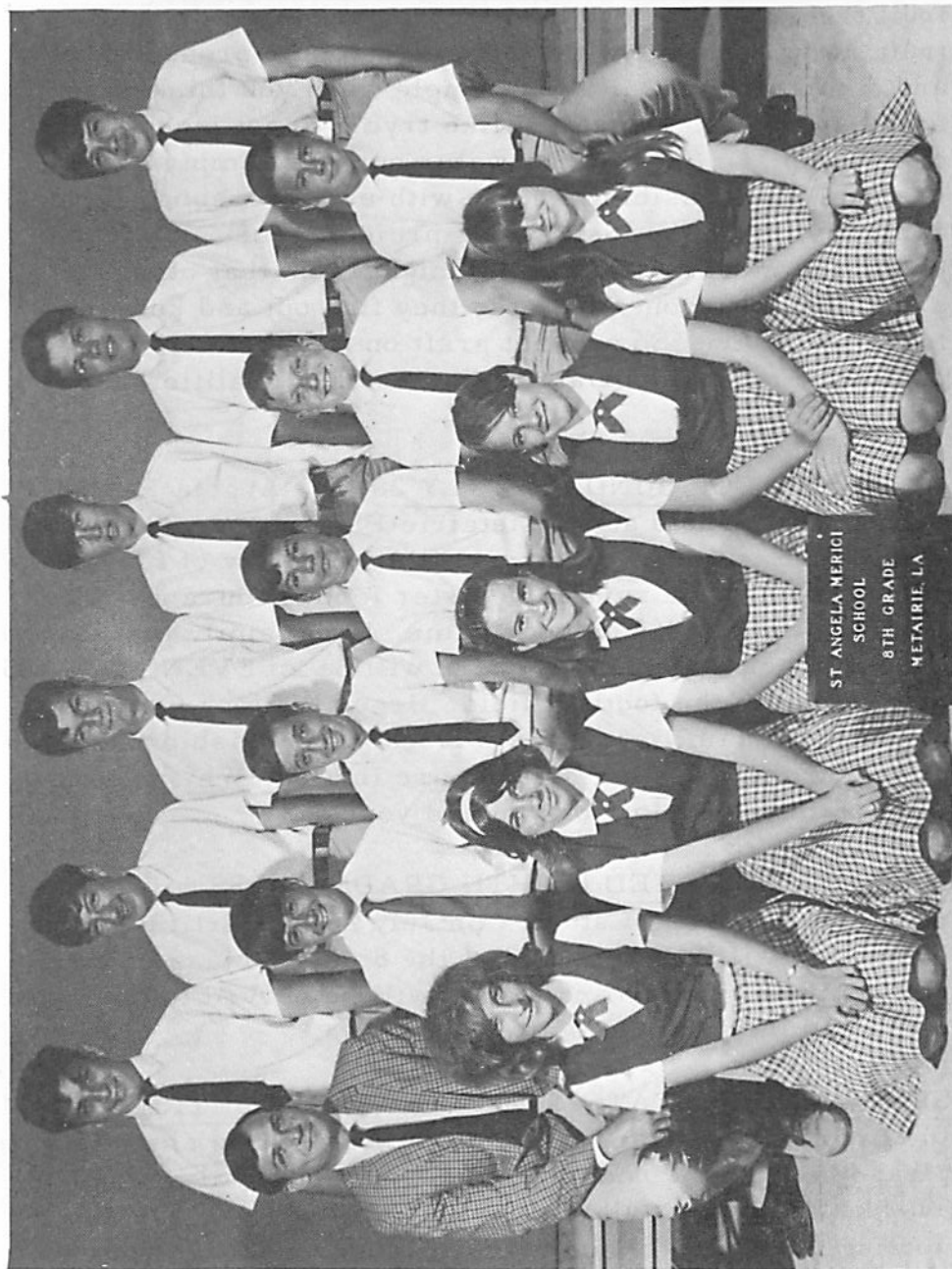
THOUGHT FOR TODAY:

CONSIDER THE POSTAGE STAMP - ITS USEFULNESS CONSISTS OF THE ABILITY TO STICK TO ONE THING TILL ITS GET THERE.



St. Angela Merici

Parish Message



ST. ANGELA MERICI CHURCH

Pastor: Father Joseph Calato
Assistants: Father Jerry Dabria
Father Frank Lipps

Rectory: 900 Beverly Garden Drive
835-0324

Convent: 828 Melody Drive
834-7628

School: 835 Melody Drive
835-8547
Staffed by Ursuline Nuns

Sunday Masses

7:00 A.M.	8:30 A.M.
9:45 A.M.	11:00 A.M.
12:15 P.M.	5:30 P.M.

Nursery service every Sunday during
9:45 and 11:00 A.M. Masses in school
building.

Weekday Masses

6:30 A.M. & 8:30 A.M.

Our Lady of Perpetual Help Novena
Tuesday 7:30 P.M.

Holy Days of Obligation

6:00 A.M.	7:15 A.M.
8:30 A.M.	9:45 A.M.
6:00 P.M.	7:15 P.M.

Confessions

Saturday: 5:00 - 6:00 P.M.
7:00 - 8:00 P.M.

Thursday before First Friday
5:00 - 6:00 P.M.
7:00 - 8:00 P.M.

Baptisms:

Arrangements should be made prior to the
Ceremony. All information should be care-
fully phoned in advance.

Only practicing Catholics can be sponsors.

PARISH MESSAGE

St. Angela Merici Church
900 Beverly Garden Dr.
Metairie, La. 70002

Second Class Postage
Paid at
Metairie, La. 70002

EIGHTH SUNDAY AFTER PENTECOST

PARISH PICNIC ON SUNDAY, JULY 28, AT METAIRIE PLAYGROUND. All parishioners and their friends are invited. The entire playground has been reserved for the picnic. Be sure to register for the free entrance prize, just sign your name. The big prize will be an outdoor gas lamp with standard to ornament your home and lawn. In the afternoon there will be games and awards for adults and children. The picnic will come to a close with an Evening Mass on the football field at 5:00 pm. (The Mass schedule at the Church will be the same as usual with Mass at 5:30 pm). This is the day when all parishioners join together in fun. Also a day when you can get to know the names of parishioners whom you see at Mass and somehow never get to know. The picnic is sponsored by the Block Couple System of the parish.

IMPORTANT SCHOOL NEWS: Confirmation of registration for all children presently enrolled in our school will take place on Thursday, August 22, 1968, in the annex building. Families A thru L will register from 9:00 to 11:30 am; families M thru Z from 1:00 to 3:00 pm. Failure to register will indicate that children, now registered, are not coming to our school. If you will be out of town, please have a neighbor or someone confirm registration. Registration and book fee plus the first month's tuition must be paid on August 22nd. Please prepare two checks - one for the book and the other for the tuition.

Registration and book fee for each child entering school is \$ 25.00. The following are the tuition rates 1968 - 69.

Kindergarten: \$ 12.00 per month for ten months.

Grades 1 thru 8 - - Family Plan

One Child - \$ 12.00 per month for ten months.

2 children - \$ 22.00 per month for ten months.

3 children or more - \$ 29.00 per month for ten months.

Kindergarten rates do not fit into the family plan. Tuition payments are for ten months because we pay our teachers salaries for ten months.

ITEMS OF INTEREST: THE ATTENDANCE AT MASS LAST SUNDAY WAS 4206 . . . 1682 RECEIVED COMMUNION . . . ENVELOPES WERE \$ 3341.00 . . . OPENING OF ST. ANGELA SCHOOL ON TUESDAY, SEPTEMBER 3RD . . . ST. ANGELA LADIES AUXILIARY, SALA, WILL HAVE ITS MONTHLY MEETING ON THURSDAY, AUG. 1 ST, AT 8:00 PM. FILM "THE PARABLE" WILL BE SHOWN AND DISCUSSED. ALL LADIES ARE INVITED . . . M.I.C. YOUTH GROUP WILL SPONSOR A DANCE ABOARD THE MARK TWAIN ON SATURDAY, JULY 27, FROM 8 PM TO 11 PM . . . FRIDAY IS THE FIRST FRIDAY WITH MASSES AT 6:30 AND 8:30 AM . . . CONFESSIONS WILL BE HEARD ON THURSDAY FROM 5 TO 6 PM AND FROM 7 TO 8 PM . . . PARISHIONERS WILL REGRET THE LEAVING OF AREA COORDINATORS, JERRY AND GINNY BUCHMAN. JERRY HAS BEEN TRANSFERRED TO CHICAGO . . . NEED ONE ADDITIONAL LECTOR FOR THE 5:30 PM MASS. CALL RECTORY FOR MORE INFO AND TRAINING . . . WITHIN SEVERAL WEEKS ART WORK, DEPICTING THE ANNUNCIATION OF THE BLESSED MOTHER, WILL BE INSTALLED ON THE WALL OF THE SIDE ALTAR IN CHURCH. IT IS A SCULPTURED PIECE DONE IN WELDED STEEL, ANOTHER ORIGINAL FOR ST. ANGELA'S.

AS WE SEE IT: ALMOST COMPLETELY LOST IS MODERN MAN'S ABILITY TO 'LISTEN'. PERHAPS IT IS BECAUSE THERE IS SO MUCH NOISE ABOUT HIM THAT HE WANTS TO 'TURN IT OFF'. OR IS IT THAT HE WANTS TO NON-CONFORM SO STRONGLY AND PROMOTE HIS INDIVIDUALITY SO INTENSLY THAT HE CANNOT BE BOTHERED ABOUT WHAT IS BEING SAID TO HIM. MOST PARENTS EXPERIENCE THIS WITH THEIR TEENAGERS AND THE TEENAGERS WITH THEIR PARENTS. NO ONE REALLY WANTS TO LISTEN. COULD BE WHY SO MANY PEOPLE DO NOT HEAR GOD WHEN HE SPEAKS. RICH EXPERIENCES ARE IN STORE FOR THOSE WHO TRULY LISTEN. WHILE ALL OF US HAVE SO MUCH TO IMPART, IT IS WELL TO LISTEN. ARE YOU LISTENING?

BANNS OF MATRIMONY:

ALBERT J. LEONARDI	&	MARGARET MEAUX	(1 ST)
WILBERT PAUL HUBBLE, JR.	&	LINDA ELIZANNE KOLB	(1 ST)
DERISE MOREL	&	ANN GAIL OLIVERE	(2 ND)
CHRISTIAN SAILOR MCAULIFFE	&	MARILYN ANN BURCHARDT	(3RD)

SATURDAY ALTAR LADIES

ELDA MEYERS
ANITA LEGENDRE
LUCILLE DEAS

CLEMMIE FITZPATRICK
MARY ANN CASADABAN
CATHRYN GRAZIANO
PAULA STEEN

JEANETTE KENNEDY
MARGARET GARLEPIED
BETTY CHATELAIN

THOUGHT FOR TODAY:

IT WOULD BE GOOD TO PRAY FOR NO RAIN THIS SUNDAY, IT WOULD BE BETTER TO PRAY EVERY SUNDAY.

PARISH MESSAGE
St. Angela Merici Church
900 Beverly Garden Dr.
Metairie, La. 70002

ST. ANGELA MERICI CHURCH

Pastor: Father Joseph Calato
Assistants: Father Jerry Dabria
Father Frank Lipps

Rectory: 900 Beverly Garden Drive
835-0324

Convent: 828 Melody Drive
834-7628

School: 835 Melody Drive
835-8547
Staffed by Ursuline Nuns

Sunday Masses

7:00 A.M.	8:30 A.M.
9:45 A.M.	11:00 A.M.
12:15 P.M.	5:30 P.M.

Nursery service every Sunday during
9:45 and 11:00 A.M. Masses in school
building.

Weekday Masses

6:30 A.M. & 8:30 A.M.

Our Lady of Perpetual Help Novena
Tuesday 7:30 P.M.

Holy Days of Obligation

6:00 A.M.	7:15 A.M.
8:30 A.M.	9:45 A.M.
6:00 P.M.	7:15 P.M.

Confessions

Saturday: 5:00 - 6:00 P.M.
7:00 - 8:00 P.M.

Thursday before First Friday
5:00 - 6:00 P.M.
7:00 - 8:00 P.M.

Baptisms:

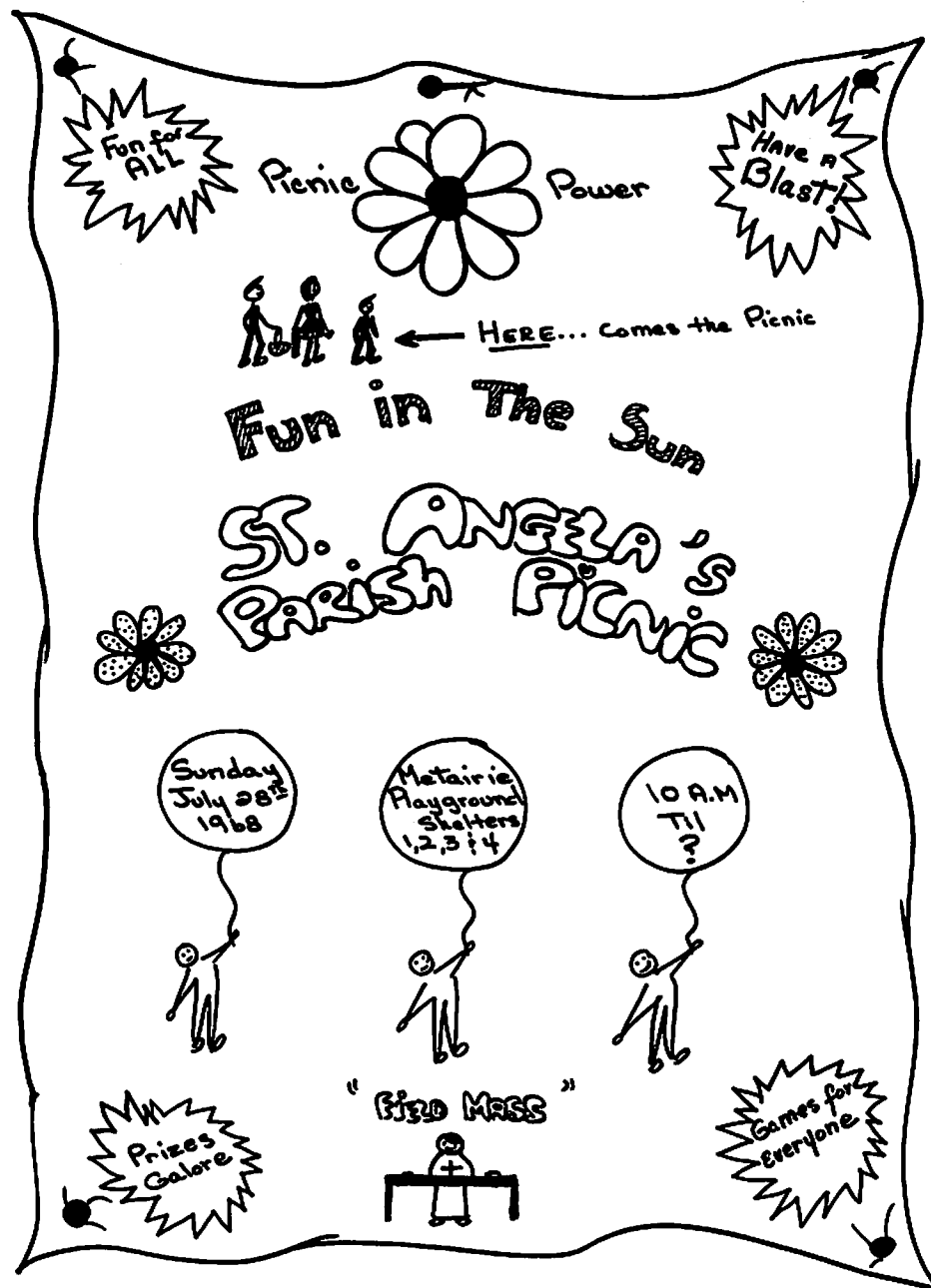
Arrangements should be made prior to the
Ceremony. All information should be care-
fully phoned in advance.

Only practicing Catholics can be sponsors.



St. Angela Merici

Parish Message



WEEKLY OFFERTORY COLLECTION NEEDED.	. \$ 5,000.00
PRESENT WEEKLY OFFERTORY ENVELOPES.	. . 4,054.00
ADDITIONAL FUNDS NEEDED THROUGH I. O. G.	. . . 946.00

ST. ANGELA MERICI FINANCIAL REPORT

Year ended June 29, 1968

JUNE 30			JUNE 30		
	1968	1967		1968	1967
<u>CHURCH COLLECTIONS</u>			<u>CHURCH EXPENDITURES</u>		
Weekly envelopes	\$ 167,269	\$ 116,675	Salaries — pastor and assistants	\$ 4,200	\$ 3,360
Loose collection	13,242	13,482	Salaries — Secretary, housekeeper, etc.	13,037	9,167
Books, robes, etc.	2,806	4,728	Stationery, postage, supplies	4,653	3,364
Development fund collections	58,938	99,718	Repairs, maintenance, utilities	6,568	2,391
Donations and other	34,376	19,446	Household expenses (food, etc.)	1,447	1,504
<u>TOTAL CHURCH COLLECTIONS</u>	<u>\$ 276,631</u>	<u>\$ 254,049</u>	Auto allowances	1,500	1,200
			Books, pamphlets	1,094	3,538
			Other expenses	1,622	2,116
			Archdiocesan assessments	41,575	4,854
<u>SCHOOL COLLECTIONS</u>			<u>PAYMENT ON DEBT PRINCIPAL</u>	108,800	141,150
Tuition and book fees	\$ 107,417	\$ 91,211	<u>INTEREST ON DEBT</u>	37,312	35,049
			Development fund payments	28,428	34,790
<u>OTHER COLLECTIONS</u>			<u>TOTAL CHURCH EXPENDITURES</u>	<u>\$ 250,236</u>	<u>\$ 242,483</u>
Clarion Herald	\$ 2,146	\$ 1,514			
Special collections	10,928	10,360	<u>SCHOOL EXPENDITURES</u>		
Refund of paving lien	6,800	---	Salaries	\$ 101,873	\$ 75,955
<u>TOTAL OTHER COLLECTIONS</u>	<u>\$ 19,874</u>	<u>\$ 11,874</u>	Books and supplies	9,766	7,947
<u>NEW LOANS FROM ARCHDIOCESE (for annex bldg.)</u>	<u>\$ 68,400</u>	<u>\$ 19,150</u>	Repairs, maintenance, utilities	8,189	6,541
<u>TOTAL RECEIPTS</u>	<u>\$ 472,322</u>	<u>\$ 376,284</u>	Other expenses	2,986	5,250
			<u>TOTAL SCHOOL EXPENDITURES</u>	<u>\$ 122,814</u>	<u>\$ 95,693</u>
<u>STATEMENT OF PARISH DEBT</u>					
<u>FUNDS BORROWED</u>			<u>OTHER EXPENDITURES</u>		
Prior years	\$ 1,140,350		Clarion Herald	\$ 9,008	\$ 9,047
This year	68,400		Special collections	10,928	10,360
<u>TOTAL BORROWED</u>	<u>\$ 1,208,750</u>		<u>TOTAL OTHER EXPENDITURES</u>	<u>\$ 19,936</u>	<u>\$ 19,407</u>
<u>FUNDS REPAID</u>			<u>NEW CONSTRUCTION AND FURNITURE</u>	<u>\$ 79,174</u>	<u>\$ 19,057</u>
Prior years	\$ 424,500		<u>TOTAL DISBURSEMENTS</u>	<u>\$ 472,160</u>	<u>\$ 376,640</u>
This year	108,800				
<u>TOTAL REPAID</u>	<u>\$ 533,300</u>				
<u>BALANCE DUE, June 30, 1968</u>	<u>\$ 675,450</u>				

August 4, 1968
Published weekly

Metairie, La.
Vol. 5 No. 30

NINTH SUNDAY AFTER PENTECOST

HOW DO YOU RATE AS A CHRISTIAN? It might demand that you do some soul searching. Is Jesus Christ the most important Person in your life? How seriously do you take Him? He speaks to the world loudly and clearly through the Church He established many centuries ago. His Vicar, Pope Paul, announces His way of life. Christ once said to St. Peter and His Apostles, "he who hears you, hears me." It was truly revealing to hear how so many Catholics squirmed and rebelled as the Holy Father declared morality norms for married persons. Yes, it would be well to rate our practice of Christianity. Is it red hot, disgustingly luke warm, or just plain dead and cold?

A PAINT PARTY will be given on Tuesday, August 6th, at 7:00 pm in our school. The main corridor of the school will be painted by the men of the parish. We need more volunteers for this project. So men, bring your paint roller and paint tray and come out. If you don't know how to paint then you can be on the "clean up" detail or help "ice down" the lemonade (?!?). Another "do it yourself" family project for St. Angela's.

FINANCIAL REPORT is enclosed for your review and analysis. Congratulations to all families who have contributed during the past fiscal year. Also published on the reverse side of the report is an analysis of actual receipts compared with budgetary needs. Early in this calendar year, at the neighborhood meetings, it was projected that a weekly collection of \$ 5,000.00 is needed to accomplish the needs of the church and school. Actual costs of operations have borne this out. And yet, only on two Sundays, since then, has the collection been at the \$ 5,000.00 mark. We ask all families who use the envelopes to seriously consider raising their level of church support. We have hundreds and hundreds of families who give only one dollar a week to the church. A one dollar bill just doesn't travel that far any more! Just a small effort on the part of all can get us there.

ITEMS OF INTEREST: THE ATTENDANCE AT MASS LAST SUNDAY WAS 3815 . . . 1582 RECEIVED COMMUNION . . . ENVELOPES WERE \$ 2675.00 . . . THE PICNIC WAS A HUGE SUCCESS DUE TO GOOD PLANNING ON THE PART OF THE LEADERS, GOOD WEATHER, AND THE GETTING TOGETHER OF SOME OF THE WORLD'S NICEST PEOPLE. A SPECIAL THANKS TO PARISHIONERS AND MERCHANTS WHO DONATED SUCH LOVELY PRIZES. . . M.I.C. YOUTH GROUP HAS A MEETING SUNDAY, AUGUST 4, AT 7PM IN THE ANNEX . . . HAVE MADE CONTACT WITH EVERYONE'S GUARDIAN ANGEL TO GET ALL PARISHIONERS TO MASS EVERY SUNDAY AND ON TIME . . . STILL NEED ONE LECTOR FOR THE 5:30 PM MASS ON SUNDAYS, ANY VOLUNTEERS . . . EXPECT A BIG TURN OUT OF MEN ON TUESDAY FOR SCHOOL PAINTING . . . SUNDAY COLLECTION LAST SUNDAY WAS DOWN BECAUSE OF THE PICNIC - NO COLLECTION WAS TAKEN AT THE FIELD MASS, WILL EXPECT THOSE ENVELOPES THIS SUNDAY . . .

MASS INTENTIONS FOR THE COMING WEEK:

SUNDAY AUGUST 4 - 9TH SUNDAY AFTER PENTECOST

7:00 - EUGENIE KERNER 8:30 - MYRA HUGHES FORESTER
9:45 - H. DUDENHEFER & D. GUIRINTANO 11:00 - TILLMAN BOURGEOIS
12:15 - MR & MRS ARCHIE DIMAGGIO 5:30PM - FOR THE PARISH

MONDAY AUGUST 5

6:30 - EDWIN B. NORRIS
8:30 - PURGATORIAL LIST

TUESDAY AUGUST 6

6:30 - JOSEPH J. REDLER
8:30 - MRS. MARIE GUILBAULT

WEDNESDAY AUGUST 7

6:30 - MRS. DENISE CHOL
8:30 - SERAPHINE BALSALMO

THURSDAY AUGUST 8

6:30 - JOHN S. ASHER
8:30 - FRANK PERRONNE

FRIDAY AUGUST 9

6:30 - MRS. JAMES NOLAN
8:30 - IRMA PRESTON

SATURDAY AUGUST 10

6:30 - LOUIS PIERCE
8:30 - CARL J. CALLIHAN

BAPTISMS THIS WEEK:

ELIZABETH JEANNE JOANEN RICHARD FRANCIS POWER

BANNS OF MATRIMONY:

ROBERT EARL SONGY	&	SANDRA ROSE CARLSON	(1 ST)
ALBERT J. LEONARDI	&	MARGARET MEAUX	(2 ND)
WILBERT P. HUBBLE, JR.	&	LINDA ELIZANNE KOLB	(2 ND)
DERISE MOREL	&	ANN GAIL OLIVERE	(3 RD)

SATURDAY ALTAR LADIES

SYLVIA MARCHESE	EULA MATHES	MAMIE RUDDOCK
BETTY ROVIRA	DOTTIE SILVA	MARY RAYMOND
BEVERLY COMMANDER	ALMA MC NAMARA	ERIN GARDNER
VIRGINIA SPELLMAN		LOUISE ADCOCK

THOUGHT FOR TODAY:

KINDNESS COSTS NOTHING - YET MANY PEOPLE THINK THEY CANNOT AFFORD IT.

PARISH MESSAGE
St. Angela Merici Church
900 Beverly Garden Dr.
Metairie, La. 70002

Second Class Postage
Paid at
Metairie, La. 70002

ST. ANGELA MERICI CHURCH

Pastor: Father Joseph Calato
Assistants: Father Jerry Dabria
Father Frank Lipps

Rectory: 900 Beverly Garden Drive
835-0324

Convent: 828 Melody Drive
834-7628

School: 835 Melody Drive
835-8547
Staffed by Ursuline Nuns

Sunday Masses

7:00 A.M.	8:30 A.M.
9:45 A.M.	11:00 A.M.
12:15 P.M.	5:30 P.M.

Nursery service every Sunday during
9:45 and 11:00 A.M. Masses in school
building.

Weekday Masses

6:30 A.M. & 8:30 A.M.

Our Lady of Perpetual Help Novena

Tuesday 7:30 P.M.

Holy Days of Obligation

6:00 A.M.	7:15 A.M.
8:30 A.M.	9:45 A.M.
6:00 P.M.	7:15 P.M.

Confessions

Saturday: 5:00 - 6:00 P.M.
7:00 - 8:00 P.M.

Thursday before First Friday

5:00 - 6:00 P.M.
7:00 - 8:00 P.M.

Baptisms:

Arrangements should be made prior to the
Ceremony. All information should be carefully
phoned in advance.

Only practicing Catholics can be sponsors



St. Angela Merici

Parish Message



ST. ANGELA MERICI PARISH MESSAGE

August 11, 1968

Published weekly

Metairie, La.

Vol. 5 No. 31

TENTH SUNDAY AFTER PENTECOST

SELF PRAISE IS LIKE A CANCER. It grows out of complete proportion and finally devours a person. Self praise can make of a person something he really is not. All objectivity is removed. Grandeur replaces humility. The simple prayer, "O God, be merciful to me, a sinner", is seldom uttered. The true Christian develops the spirit of humility by being honest with himself and with others. He is thankful to Almighty God for all his accomplishments. He is attentive at Holy Mass every Sunday. He goes to Mass to praise God, not himself. He goes to Mass not out of habit but rather out of devotion and love. Yes, self-praise is like a cancer. But it is curable, simply exercise humility with many prayers as needed.

THURSDAY, AUGUST 15th is the Feast of the Assumption of Our Lady into Heaven. It is a holy day of obligation. The Mass schedule for Thursday will be 6:00, 7:15, 8:30, 9:45 am, 6:00 & 7:15 pm. Show your love and devotion by receiving Holy Communion on this great feast of Mary. CONFESSIONS will be heard on Wednesday from 5 to 6, and from 7 to 8 pm.

SCHOOL NEWS: Confirmation of all children registered in school will take place on August 22. Families A thru L from 9:00 to 11:30; families M thru Z from 1:00 to 3:30. Registration & Book Fee per child is \$25.00. This fee plus the first month's tuition is payable on August 22nd. Please prepare two checks - one for book fee and the other for the tuition. The following are the tuition rates: Kindergarten: \$12.00 per month for ten months. Grades 1 thru 8 - Family Plan: One child - \$12.00 per month for ten months. 2 children: \$ 22.00 per month for ten months. 3 children or more - \$29.00 per month for ten months. Since our school is subsidized by the Sunday envelopes users, families who do not use their envelopes regularly can expect a substantial raise in the above listed rates.

ITEMS OF INTEREST: THE ATTENDANCE AT MASS LAST SUNDAY WAS 3851 . . . 1331 RECEIVED COMMUNION . . . ENVELOPES WERE \$ 4062.00 . . . WISH TO THANK THE MEN OF THE PARISH FOR UNITING THEIR TALENTS TO HELP GET OUR SCHOOL READIED FOR SEPTEMBER . . . SCHOOL OPENS ON TUESDAY, SEP. 3RD. . . HOPE BY THE TIME YOU GET THIS ISSUE OF THE MESSAGE THAT OUR MADONNA DEPICTING THE ANNUNCIATION WILL BE INSTALLED IN CHURCH . . . PLEASE USE OUR PARKING AREA ON SUNDAYS, A TRUE CHRISTIAN WILL IDENTIFY HIMSELF IF HE DAMAGES ANOTHER CAR . . . SAMA WILL HAVE ITS SOCIAL MEETING ON THUR. AUG., 15 IN THE ANNEX IMMEDIATELY AFTER THE 7:15 PM MASS . . . FRONT COVER OF MESSAGE FEATURES MIC JUNIOR BOYS WHO WILL BE PLAYING FOR THE CYO CITY CHAMPIONSHIP.

MASS INTENTIONS FOR THE COMING WEEK:

SUNDAY AUGUST 11 - 10TH SUNDAY AFTER PENTECOST

7:00 - MISS AMY OLIVIERA

8:30 - MR. CLAUDE J. MILLET

9:45 - MALCOLM EHRHARDT, JR.

11:00 - FRANK FONTANA

12:15 - WAYNE NUNEZ

5:30PM - FOR THE PARISH

MONDAY AUGUST 12

TUESDAY AUGUST 13

6:30 - PURGATORIAL LIST

6:30 - O.J. SCHMIDT, SR.

8:30 - MILTON SPRINGMAN

8:30 - ALMA LACROUTS

WED. AUG. 14 - 6:30-SPEC. INTEN.

8:30 - PAUL CALECAS

THURSDAY AUGUST 15 - ASSUMPTION OF OUR LADY

6:00 - EMILY MALONEY

7:15 - ARTHUR MARTIN

8:30 - MATTHEW H. STIRE

9:45 - HM THANKS TO BVM

6:00 PM - ANGELIA RIZZUTO

7:15 PM - FOR THE PARISH

FRIDAY AUGUST 16

SATURDAY AUGUST 17

6:30 - MR & MRS F. GRILLETTA

6:30 - MR & MRS EDW. J. FALGOUST

8:30 - MRS. AGATHA FEDERICO

8:30 - CRUCIFIC PISCIOTTA

BAPTISMS THIS WEEK:

VINCENTE MIRE, JR.

LYNNETT YOLANDA KEELE

ROBERT FRANCIS LEAUMONT, JR.

BANNS OF MATRIMONY:

SIDNEY F. LAMBERT
ROBERT J. LEABER, JR.
ROBERT EARL SONGY
ALBERT J. LEONARDI
WILBERT P. HUBBLE, JR.

& KAREN ANN BECKER (1 ST)
& LYNDA ANN ROUILLIER (1 ST)
& SANDRA ROSE CARLSON (2 ND)
& MARGARET MEAUX (3 RD)
& LINDA ELIZANNE KOLB (3 RD)

SATURDAY ALTAR LADIES

IDA MIALARET
HELEN DREW
BETTY PONTHEUX

DELORES PRINZ
ANNA PERRONNE

ESTHER LONERGAN
LOU SONGY
RUTH LE BOURGEOIS

THOUGHT FOR TODAY:

THE HARDEST THING ABOUT MAKING MONEY LAST IS MAKING IT FIRST.



St. Angela Merici

Parish Message



ST. ANGELA MERICI CHURCH

Pastor: Father Joseph Calato
Assistants: Father Jerry Dabria
Father Frank Lipps

Rectory: 900 Beverly Garden Drive
835-0324

Convent: 828 Melody Drive
834-7628

School: 835 Melody Drive
835-8547
Staffed by Ursuline Nuns

Sunday Masses

7:00 A.M.	8:30 A.M.
9:45 A.M.	11:00 A.M.
12:15 P.M.	5:30 P.M.

Nursery service every Sunday during
9:45 and 11:00 A.M. Masses in school
building.

Weekday Masses

6:30 A.M. & 8:30 A.M.

Our Lady of Perpetual Help Novena
Tuesday 7:30 P.M.

Holy Days of Obligation

6:00 A.M.	7:15 A.M.
8:30 A.M.	9:45 A.M.
6:00 P.M.	7:15 P.M.

Confessions

Saturday: 5:00 - 6:00 P.M.
7:00 - 8:00 P.M.
Thursday before First Friday
5:00 - 6:00 P.M.
7:00 - 8:00 P.M.

Baptisms:

Arrangements should be made prior to the
Ceremony. All information should be care-
fully phoned in advance.

Only practicing Catholics can be sponsors.

PARISH MESSAGE

St. Angela Merici Church
900 Beverly Garden Dr.
Metairie, La. 70002

Second Class Postage
Paid at
Metairie, La. 70002

ST. ANGELA MERICI PARISH MESSAGE

August 18, 1968

Published weekly

Metairie, La.

Vol. 5 No. 32

ELEVENTH SUNDAY AFTER PENTECOST

SCHOOL NEWS: Confirmation of registration for all children who are enrolled in our school will take place on Thursday, August 22nd. Families A thru L from 9:00 to 11:30; families M thru Z from 1:00 to 3:30 pm. Registration and Book Fee per child is \$25.00. This fee plus the first month's tuition is payable on August 22. Please prepare two checks - one for the book fee and the other for tuition. Tuition rates are: Kindergarten, \$12 per month for 10 mos. Grades 1 thru 8 - Family Plan
One Child - \$12 per month for ten months
2 children - \$22 per month for ten months
3 children or more \$29 per month for ten months.
Since our school tuition does not completely finance the operation of school, it must be subsidized by the users of the Sunday envelopes. Hence, families who do not use the envelopes can expect a substantial raise in the above listed tuition rates.

LATEST ADDITION TO THE CHURCH is an original sculptured work depicting the Annunciation of the Blessed Virgin Mary. The artistic medium is steel rods welded together for a two dimensional effect. The Dove and flames of motion symbolize the presence of the Holy Spirit. This truly great work was executed by Mr. John Scott, art professor at Xavier University. The same artist did our holy water fonts. He has been commissioned to do a study of St. Joseph for the other side altar and a full dimensional rendition of the Risen Christ, to be suspended over the Altar of Sacrifice.

METAIRIE DEANERY CATHOLIC WOMEN will meet on Aug. 22, at St. Philip Neri School, 8pm. SALA invited.

SINCERE THANKS to the men of the parish who came out to paint in the school. The job was accomplished in exactly one hour and fifteen minutes!! Shows what cooperation can do (saves our parish money too!)

ITEMS OF INTEREST: THE ATTENDANCE AT MASS LAST SUNDAY WAS

3852 . . . 1346 RECEIVED COMMUNION . . . ENVELOPES WERE \$ 3911.00

. . . ALL ARE INVITED TO RUMMEL HIGH SCHOOL THEATER FOR A STAGE PERFORMANCE OF "LITTLE MOON OF ALBAN", AUG. 22 TO 25, 8:30 PM.
ADULTS-\$1.25, STUDENTS 75 CENTS. . . SCHOOL OPENS ON TUES., SEP. 3RD
SO MOTHERS JUST HANG ON FOR A FEW MORE WEEKS . . . LANDSCAPING AROUND THE CHURCH BUILDING HAS BEGUN . . . TREES ARE THE FIRST PHASE, SHRUBS AND FLORAL PLANTS TO COME LATER AS FUNDS ARE AVAILABLE. . . WHY NOT START THE DAY BY COMING TO THE 6:30 OR 8:30 AM MASS, IT WILL MAKE A DIFFERENCE.

MASS INTENTIONS FOR THE COMING WEEK:

SUNDAY AUGUST 18 - 11TH SUNDAY AFTER PENTECOST

7:00 - ALBERT DROUET

8:30 - MATTHEW J. DORAN

9:45 - MISS MARIE CIEUTAT

11:00 - EMILY B. ARMBRUSTER

12:15 - MR & MRS M. LATUSO

5:30PM - FOR THE PARISH

MONDAY AUGUST 19

THURSDAY AUGUST 22

6:30 - PURGATORIAL LIST

6:30 - IDA LEJEUNE

8:30 - MRS. EDWINA GAUTHREAUX

8:30 - LOUIS DUPLAISIR

TUESDAY AUGUST 20

FRIDAY AUGUST 23

6:30 - POOR SOULS IN PURGATORY

6:30 - MR. JAKE CARUSO

8:30 - IRENE HERNANDEZ

8:30 - JAMES CALLAWAY

WEDNESDAY AUGUST 21

SATURDAY AUGUST 24

6:30 - FRANCIS BRUE

6:30 - CHARLES LATOUR

8:30 - FRANK FONTANA

8:30 - MR & MRS D. BRONZO

BAPTISMS THIS WEEK:

PAUL STEPHEN FALGOUT

MICHELLE ELIZABETH PIPKIN

BANNS OF MATRIMONY:

JOSEPH TERRY VASTERLING
REYNOLD J. GIROR, JR.
SIDNEY F. LAMBERT
ROBERT J. LEABER, JR.
ROBERT EARL SONGY

& MARY LOU PETTAVINO (1 ST)
& PHYLLIS DI GIOVANNI (1 ST)
& KAREN ANN BECKER (2ND)
& LYNDIA ANN ROUILLIER (2ND)
& SANDRA ROSE CARLSON (3RD)

IN YOUR CHARITY PLEASE PRAY FOR THE SOULS OF MRS. MAMIE DUPUY, RONALD PORCHE AND MR. JOSEPH WERNER.

SATURDAY ALTAR LADIES

MARIE POCHÉ
JUANITA HENRIES
RUTH HOOD

MARGARET BALLARD
ROSE COLLURA

THELMA BOECKELMAN
ROSALIE CLARET
ROSE MARY SMITH

THOUGHT FOR TODAY:

THERE IS NO SUBSTITUTE FOR BRAINS - BUT SILENCE HELPS A LOT.



St. Angela Merici

Parish Message

ST. ANGELA MERICI CHURCH

Pastor: Father Joseph Calato
Assistants: Father Jerry Dabria
Father Frank Lipps

Rectory: 900 Beverly Garden Drive
835-0324

Convent: 828 Melody Drive
834-7628

School: 835 Melody Drive
835-8547
Staffed by Ursuline Nuns

Sunday Masses

7:00 A.M.	8:30 A.M.
9:45 A.M.	11:00 A.M.
12:15 P.M.	5:30 P.M.

Nursery service every Sunday during
9:45 and 11:00 A.M. Masses in school
building.

Weekday Masses

6:30 A.M. & 8:30 A.M.

Our Lady of Perpetual Help Novena
Tuesday 7:30 P.M.

Holy Days of Obligation

6:00 A.M.	7:15 A.M.
8:30 A.M.	9:45 A.M.
6:00 P.M.	7:15 P.M.

Confessions

Saturday: 5:00 - 6:00 P.M.
7:00 - 8:00 P.M.

Thursday before First Friday
5:00 - 6:00 P.M.
7:00 - 8:00 P.M.

Baptisms:

Arrangements should be made prior to the
Ceremony. All information should be carefully
phoned in advance.

Only practicing Catholics can be sponsors.

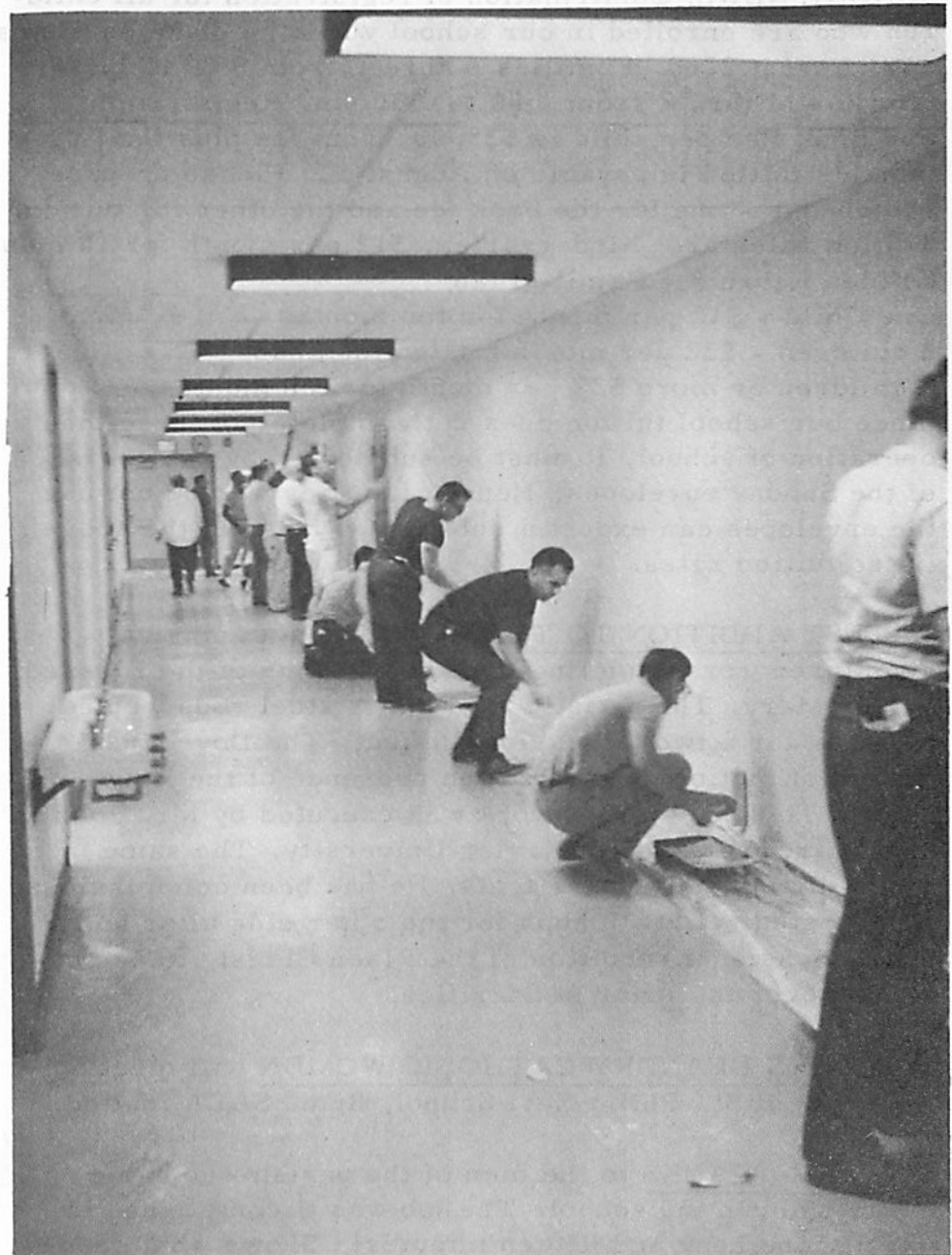
PARISH MESSAGE

St. Angela Merici Church
900 Beverly Garden Dr.
Metairie, La. 70002

Second Class Postage
Paid at
Metairie, La. 70002

Postmaster: If undeliverable
Form 3579 Requested

Subscription \$1.00



ST. ANGELA MERICI PARISH MESSAGE

September 1, 1968

Published weekly

Metairie, La.

Vol. 5 No. 34

THIRTEENTH SUNDAY AFTER PENTECOST

"HAIL MARY FULL OF GRACE". With these words the angel announced to Mary that she was to become the Mother of God. The Holy Spirit overshadowed her and the Word was made flesh. The Madonna in Church depicts this great event as the beginning of Christianity. The artist, Mr. John Scott of Xavier University, used the medium of welded steel to remind us of this great reality. Modern man uses steel as a basic material in today's society; the artist uses it here to give artistic and masterful meaning to the current influence of Mary and Christ in modern man's spiritual life. Do not look for the "plastic" or "sweet" look here, but rather for the inner meaning and majesty of Mary and of her role in the Incarnation.

ST. ANGELA MERICI SCHOOL will open on Tuesday, September 3rd, at 8:30 am, with a full day of classes. Bus transportation is provided by Jefferson Parish for grades 1 thru 8. Kindergarten children are not permitted to ride the busses. The bus schedule, as to pick up points, will only be established after the first few days of school. So parents, please be patient. Initially, the drivers will pick up the children at the last year's designated points and adjustments will be made as needed.

LABOR DAY is a day to thank God for the health and strength to produce a day's labor. Why not begin the day by coming to Mass? The Masses will be at 6:30 & 8:30 am.

JUST AS CHILDREN MUST BEGIN SCHOOL with the right attitude so parents must assume a certain mental frame of mind. The school of your choice can only accomplish what you allow it. St. Angela's school is not a "miracle school". We can do for your child only what you, as the prime educators, help us to do. Every parent should read carefully the school policies, and seriously inform the child as to their contents. This year our enrollment numbers over a thousand children.

ITEMS OF INTEREST: THE ATTENDANCE AT MASS LAST SUNDAY WAS 4404 . . . 1776 RECEIVED COMMUNION . . . ENVELOPES WERE \$ 3449.00 . . . WISH TO REMIND ALL THAT A FREE NURSERY IS CONDUCTED EVERY SUNDAY DURING THE 9:45 AND 11:00 AM MASSES, IT DOES MAKE A DIFFERENCE FOR ALL IN CHURCH. . . SCHOOLS OF RELIGION FOR ELEMENTARY AND HIGH SCHOOL STUDENTS WILL OPEN TOWARD THE END OF SEPTEMBER. THE 7TH AND 8TH GRADERS WILL ATTEND CLASSES ON SATURDAY MORNING. MORE LATER . . . IT IS AMAZING HOW MANY BITS OF PAPER AND HAND TISSUES ARE FOUND IN CHURCH AT THE END OF THE SUNDAY MASSES. IT'S BAD ENOUGH TO LITTER ON THE OUTSIDE, BUT IN CHURCH ? . . . A WELCOME TO ALL NEW PUPILS IN OUR SCHOOL, ESPECIALLY, THE EXCITED LITTLE KINDERGARTENERS.

MASS INTENTIONS FOR THE COMING WEEK:

SUNDAY SEPTEMBER 1 - 13TH SUNDAY AFTER PENTECOST

7:00 - JOHN J. LE BLANC

8:30 - LOUIS J. KARTER

9:45 - HM HONOR ST. LUCY

11:00 - MYRA HUGHES FORESTER

12:15 - MRS. JEANNE HEITKAMP

5:30PM - THANKS TO ST. JUDE

MONDAY SEPTEMBER 2

THURSDAY SEPTEMBER 5

6:30 - PURGATORIAL LIST

6:30 - EDWIN B. NORRIS

8:30 - EDGAR BORDELON

8:30 - JENNIE RIZZUTO

TUESDAY SEPTEMBER 3

FRIDAY SEPTEMBER 6

6:30 - ANNIE WITTMANN

6:30 - JOSEPH J. REDLER

8:30 - EDWIN P. LANKSTON

8:30 - ANTHONY INCARDONA

WEDNESDAY SEPTEMBER 4

SATURDAY SEPTEMBER 7

6:30 - EUGENIE KERNER

6:30 - MRS. DENISE CHOL

8:30 - MRS. MARIE GUILBAULT

8:30 - CATHERINE RIZZUTO

BAPTISMS THIS WEEK:

MICHELLE DENISE CATANIA

ANNE MARIE MESSINA

MARY ELIZABETH GUARISCO

BANNS OF MATRIMONY:

JOSEPH TERRY VASTERLING & MARY LOU PETTAVINO (3RD)

REYNOLD J. GIROIR, JR. & PHYLLIS DI GIOVANNI (3RD)

SATURDAY ALTAR LADIES

PATTY MOUNT

SHIRLEY CODIFER

PAT DANIEL

MARCELLE PFISTER

ADELE MEEHAN

MARY ANN LANDRY

LORRAINE DANIEL

JO SMITH

THOUGHT FOR TODAY:

FAITH IS LIKE A WHEELBARROW - YOU¹VE GOT TO PUT SOME PUSH BEHIND IT TO MAKE IT WORK.

PARISH MESSAGE
St. Angela Merici Church
900 Beverly Garden Dr.
Metairie, La. 70002

Second Class Postage
Paid at
Metairie, La. 70002

ST. ANGELA MERICI CHURCH

Pastor: Father Joseph Calato
Assistants: Father Jerry Dabria
Father Frank Lipps

Rectory: 900 Beverly Garden Drive
835-0324

Convent: 828 Melody Drive
834-7628

School: 835 Melody Drive
835-8547
Staffed by Ursuline Nuns

Sunday Masses

7:00 A.M.	8:30 A.M.
9:45 A.M.	11:00 A.M.
12:15 P.M.	5:30 P.M.

Nursery service every Sunday during
9:45 and 11:00 A.M. Masses in school
building.

Weekday Masses

6:30 A.M. & 8:30 A.M.

Our Lady of Perpetual Help Novena

Tuesday 7:30 P.M.

Holy Days of Obligation

6:00 A.M.	7:15 A.M.
8:30 A.M.	9:45 A.M.
6:00 P.M.	7:15 P.M.

Confessions

Saturday: 5:00 - 6:00 P.M.
7:00 - 8:00 P.M.

Thursday before First Friday

5:00 - 6:00 P.M.
7:00 - 8:00 P.M.

Baptisms:

Arrangements should be made prior to the
Ceremony. All information should be care-
fully phoned in advance.

Only practicing Catholics can be sponsors.



St. Angela Merici

Parish Message



S A L A

NEWSLETTER

Greetings to all SALA Members and Friends!

First of all, congratulations to members and friends for the fine turn-outs at the July and August meetings! There were many new faces among our regulars and this was delightful! There seems to be a fine new spirit in our group, lots of discussion and ideas in the air - so keep it up - we are off to a good start.

During the summer months, the standing committees were very active, and although there were no lengthy reports on them at the last two meetings, be assured the ladies were busy as beavers. Flowers were cared for by Pat Polizzi, linens were ironed by Ruth LeBourgeois; Elda Meyers and Betty Chatelain made 63 baptismal gowns; new committees started. You must admit the refreshments committee outdid themselves - those lovely cool drinks! So all in all, efficiency prevailed, even in the heat.

* * * * *

Dates to remember:

Sept. 3 - School starts

Sept. 5 - Regular meeting: A film on dope addiction
will be shown

Sept. 17 - Board members will attend an Evening of
Recollection at the Cenacle

Sept. 19 - Board meeting at the Rectory - 9:30 am

S A L A

OFFICERS AND COMMITTEE CHAIRMEN

President:	Jean Sutton	835 4682
1st V.P.:	Ann Zainey	835 8046
2nd V.P.:	Mary Nicolini	835 0718
Secretary:	Cindy Roman	834 1377
Treasurer:	Patty Mount	834 1571

COMMITTEE CHAIRMEN:

Parliamentarian:	Diana Durham	833 2251
Membership:	Marilyn Quirk	833 0056
Hospitality:	Rosemary Gaudry	833 0442
Program:	Ann Zainey	835 8046
	Mary Nicolini	833 0718
Publicity:	Catherine Peyton	833 2526
Historian:	Mary Ann Landry	835 0981
C. C. D.	Joyce Palermo	835 2273
Ways & Means:	Sara Ford	834 1629
Church Helpers:	Rita Hamilton	834 0363
School:	Sylvia Maher	835 2920
	Dee Broussard	835 4772
Cub Scouts:	Vinca Delesdernier	834 1409
Girl Scouts:	Pat Daniel	833 3955
Editorial:	Adele Meehan	834 7395
Telephone:	Alma McNamara	833 2734
Liturgical:	Ida Mialaret	834 4513
Block System:	Rita Kennedy	835 4604
Youth:	Bonnie Harrell	833 0591

ST. ANGELA MERICI PARISH MESSAGE

September 8, 1968

Published weekly

Metairie, La.

Vol. 5 No. 35

FOURTEENTH SUNDAY AFTER PENTECOST

RELIGIOUS INSTRUCTIONS: Elementary School of Religion begins on Saturday, October 5, from 9am to 10:15. These classes are for children attending public school, grades 1 thru 8. Notice that Seventh and Eighth graders attend on Saturday morning. The High School of Religion grades 9 thru 12, will begin on Monday, September 30, from 7 to 8 pm. These classes will be held every Monday night in various homes throughout the parish. Once registrations have been held the centers will be announced. Registrations for both schools of Religion will be held on Saturday, September 21, from 10 to 12 noon, in the annex. Book fee for each student is \$ 5.00.

ATTENTION ALL LSUNO STUDENTS! Visit the Newman House at 6645 Elysian Fields or call 288-9048. A truly exciting program has been scheduled for this school year. This is your chance to meet others on campus and also to participate in the various activities.

CATHOLIC ALUMNI CLUB (for young Catholic adults who are single and college graduates), will sponsor a "Las Vegas Party" on September 14 at the New Orleans Press Club, 201 Chartres St., at 8:00 pm. For more info about activity or club call Jeanne 529-2851 or 945-9876.

NOW THAT SCHOOL IS OPEN all mothers are invited to attend the 8:30 am Mass during the week. Why not pick one or two days? It will make a difference in your life.

ST. ANGELA MEN'S ASSOCIATION will meet on Thursday, Sept. 19, at 8:00 pm in the annex. All men in the parish are invited. Expect a big turnout for the back to school.

IT IS NOW GETTING to be a matter of concern over the consistent drop in our weekly collection. All are asked to honor their IOG committment. Use your envelope.

ITEMS OF INTEREST: THE ATTENDANCE AT MASS LAST SUNDAY WAS 3913 . . . 1607 WENT TO COMMUNION . . . ENVELOPES WERE \$ 3918.00 . . . THE FRONT COVER OF MESSAGE FEATURES THE FACULTY OF OUR SCHOOL . . . THE ST. ANGELA YOUTH (MIC) WILL MEET ON SUNDAY, SEPT. 8, AT 7 PM IN THE ANNEX . . . OUR SCHOOL OPENED WITH ITS USUAL SMOOTHNESS, THERE WERE SOME RED EYED CHILDREN AND MOTHERS, BUT AGAIN THERE WERE HAPPY CHILDREN AND DELIGHTED MOTHERS . . . ATTEND THE NOVENA SERVICES EVERY TUESDAY AT 7:30 PM . . . ALL 26 OF OUR CLASSROOMS ARE FILLED TO CAPACITY. . . IN THE NEAR FUTURE A PROGRAM OF RELIGIOUS INSTRUCTIONS FOR FOUR AND FIVE YEAR OLDS WILL BE ANNOUNCED; THE CLASSES WILL BE CONDUCTED DURING THE SUNDAY MORNING NURSERY. WE WILL NEED ABOUT SEVEN HIGH SCHOOL GIRLS OR BOYS TO TEACH, ANY VOLUNTEERS? . . . PARISHIONERS ARE URGED TO USE THE PARKING LOTS ON SUNDAYS . . . SHOW CHRISTIAN CONSIDERATION WHILE IN CHURCH, A CHURCH IS NOT A PUBLIC PLACE BUT THE HOME OF YOUR FATHER.

MASS INTENTIONS FOR THE COMING WEEK:

SUNDAY SEPTEMBER 8 - 14TH SUNDAY AFTER PENTECOST

7:00 - CLAUDE J. MILLET

8:30 - FRANK PERRONNE

9:45 - MRS. ADELLE KNOBLOCK

11:00 - TILLMAN BOURGEOIS

12:15 - MALCOLM EHRHARDT, JR.

5:30 PM - SCOTT M. BUTLER

MONDAY SEPTEMBER 9

THURSDAY SEPTEMBER 12

6:30 - PURGATORIAL LIST

6:30 - O. J. SCHMIDT, SR.

8:30 - CRUCIFIC PISCIOTTA

8:30 - PETE E. BARRE

TUESDAY SEPTEMBER 10

FRIDAY SEPTEMBER 13

6:30 - IRMA PRESTON

6:30 - LOUIS PIERCE

8:30 - JOHN S. ASHER

8:30 - ALMA LACROUTS

WEDNESDAY SEPTEMBER 11

SATURDAY SEPTEMBER 14

6:30 - KATHERINE VILLANI

6:30 - PAUL CALECAS

8:30 - WAYNE NUNEZ

8:30 - AGNES R. GESSLER

BAPTISMS THIS WEEK:

PIERRE LACOSTE III

SCOTT PHILIP DI GIOVANNI

SATURDAY ALTAR LADIES

ELDA MEYERS

CLEMMIE FITZPATRICK JEANETTE KENNEDY

ANITA LEGENDRE

CATHRYN GRAZIANO MARGARET GARLEPIED

MARY ANN CASADABAN

PAULA STEEN BETTY CHATELAIN

LUCILLE DEAS

THOUGHT FOR TODAY:

MANY A LIVE WIRE WOULD BE DEAD EXCEPT FOR HIS CONNECTIONS.



St. Angela Merici

Parish Message



ST. ANGELA MERICI CHURCH

Pastor: Father Joseph Calato
Assistants: Father Jerry Dabria
Father Frank Lipps

Rectory: 900 Beverly Garden Drive
835-0324

Convent: 828 Melody Drive
834-7628

School: 835 Melody Drive
835-8547
Staffed by Ursuline Nuns

Sunday Masses

7:00 A.M.	8:30 A.M.
9:45 A.M.	11:00 A.M.
12:15 P.M.	5:30 P.M.

Nursery service every Sunday during
9:45 and 11:00 A.M. Masses in school
building.

Weekday Masses

6:30 A.M. & 8:30 A.M.

Our Lady of Perpetual Help Novena
Tuesday 7:30 P.M.

Holy Days of Obligation

6:00 A.M.	7:15 A.M.
8:30 A.M.	9:45 A.M.
6:00 P.M.	7:15 P.M.

Confessions

Saturday: 5:00 - 6:00 P.M.
7:00 - 8:00 P.M.

Thursday before First Friday
5:00 - 6:00 P.M.
7:00 - 8:00 P.M.

Baptisms:

Arrangements should be made prior to the
Ceremony. All information should be care-
fully phoned in advance.

Only practicing Catholics can be sponsors.

PARISH MESSAGE

St. Angela Merici Church
900 Beverly Garden Dr.
Metairie, La. 70002

Second Class Postage
Paid at
Metairie, La. 70002

FIFTEENTH SUNDAY AFTER PENTECOST

CHOIR PRACTICE. On Tuesday, Sept. 17, at 8:00 pm, in Church, the choir will have its first practice of the season. All choir members and new-comers are invited, male and female voices. The choir will be under the direction of Mr. John Salvaggio. Mrs. Iris Arena, organist.

ST. ANGELA MEN'S ASSOCIATION will meet on Thursday, Sept. 19, at 8:00 pm in the annex. The Canon of the Mass will be discussed. Important business for the coming year will be outlined. Urge all men to attend!

RELIGIOUS INSTRUCTIONS:

Pre-School children (ages 4 & 5). Registration for these children will be held on Sunday, Sept. 22, at the nursery during the 9:45 and 11:00 am Masses. These classes will be conducted every Sunday at the nursery during the 9:45 Mass.

ELEMENTARY SCHOOL OF RELIGION. For all children, grades, 1 thru 8th. Registration on Saturday, Sept. 21, from 10 to 11:30 am. Classes will start on Saturday, Sep. 28, from 9:15 to 10:15am, and continue every Saturday.

HIGH SCHOOL OF RELIGION. Registration on Saturday, Sept. 21, from 10 to 12 noon. Classes will start on Monday, Sept. 30, from 7 to 8 pm, at the annex. Then on Monday, Oct. 7, and every Monday thereafter, the classes will be conducted in various homes throughout the parish.

ADULT EDUCATION. A new program for all adults including a basic course in Catholicism (for Catholics as well as Non-Catholics); a course on the Bible; a visual aid program on the Mass and Christian Living. This will start in October on Wednesday nights. More information will be given at a later date.

YOU MAY NOTICE FROM THE ABOVE, that regardless of your age and station in life there is an opportunity being given to all parishioners to receive more instructions in their religion. So if you're 4 yrs. or over, JOIN US.

ITEMS OF INTEREST: THE ATTENDANCE AT MASS LAST SUNDAY WAS 4312 . . . 1898 RECEIVED COMMUNION . . . ENVELOPES WERE \$ 4064.00 . . . CONGRATULATIONS TO MR. AND MRS. LEO CONNERS, 723 HOMESTEAD, WHO CELEBRATED THEIR GOLDEN WEDDING ANNIVERSARY WITH A MASS OF THANKSGIVING AT ST. ANGELA'S LAST SATURDAY . . . ALL GIRLS WHO WISH TO BECOME GIRL SCOUTS SHOULD ATTEND A MEETING ON WEDNESDAY, SEPT. 18, AT 8 PM IN OUR ANNEX . . . OUR THANKS TO MARTY PFISTER WHO WILL NO LONGER DIRECT THE CHOIR FOR PERSONAL AND BUSINESS REASONS . . . THE PARISH WILL MISS SID AND ALEDA ROUGELOT AND FAMILY WHO ARE MOVING TO HAMMOND, LA., OUR PRAYERS AND BEST WISHES GO WITH THEM . . . SHOW CONCERN BY INVITING YOUR NEIGHBOR TO MASS ON SUNDAY . . . OUR SCHOOL HAS 1030 CHILDREN ENROLLED . . . PLEASE USE THE PARKING LOTS ON SUNDAY BEFORE USING OFF-STREET PARKING, BEEN THINKING ABOUT GIVING ROSARIES FOR PENANCE TO VIOLATORS.

MASS INTENTIONS FOR THE COMING WEEK:

SUNDAY SEPTEMBER 15 - 15TH SUNDAY AFTER PENTECOST

7:00 - EDWIN B. NORRIS

8:30 - MATTHEW H. STIRE

9:45 - MR. & MRS. M. LATUSO

11:00 - MR. & MRS. ARCHIE DI MAGGIO

12:15 - EMILY MALONEY

5:30 PM - FOR THE PARISH

MONDAY SEPTEMBER 16

THURSDAY SEPTEMBER 19

6:30 - PURGATORIAL LIST

6:30 - MRS. EDWINA GAUTREAU

8:30 - MR. & MRS. F. GRILLET

8:30 - ALBERT DROUET

TUESDAY SEPTEMBER 17

FRIDAY SEPTEMBER 20

6:30 - THANKSGIVING

6:30 - MRS. FRANK LANGRIDGE

8:30 - IDA LE JEUNE

8:30 - IRENE HERNANDEZ

WEDNESDAY SEPTEMBER 18

SATURDAY SEPTEMBER 21

6:30 - EMILY B. ARMBRUSTER

6:30 - FRANCIS BRUE

8:30 - MILTON SPRINGMAN

8:30 - FRANK FONTANA

BAPTISMS THIS WEEK:

ANGELE THERESE DUET

ALLISON OUIDA MEHRHOFF

RENEE LYNN SONGY

MIRIAM ELIZABETH BERCIER

BANNS OF MATRIMONY:

JOSEPH GUARISCO, JR.

&

ADRIENNE ANN LECHE

(1 ST)

SATURDAY ALTAR LADIES

TEAM NO. 1 WILL CLEAN THE CHURCH THIS SATURDAY.

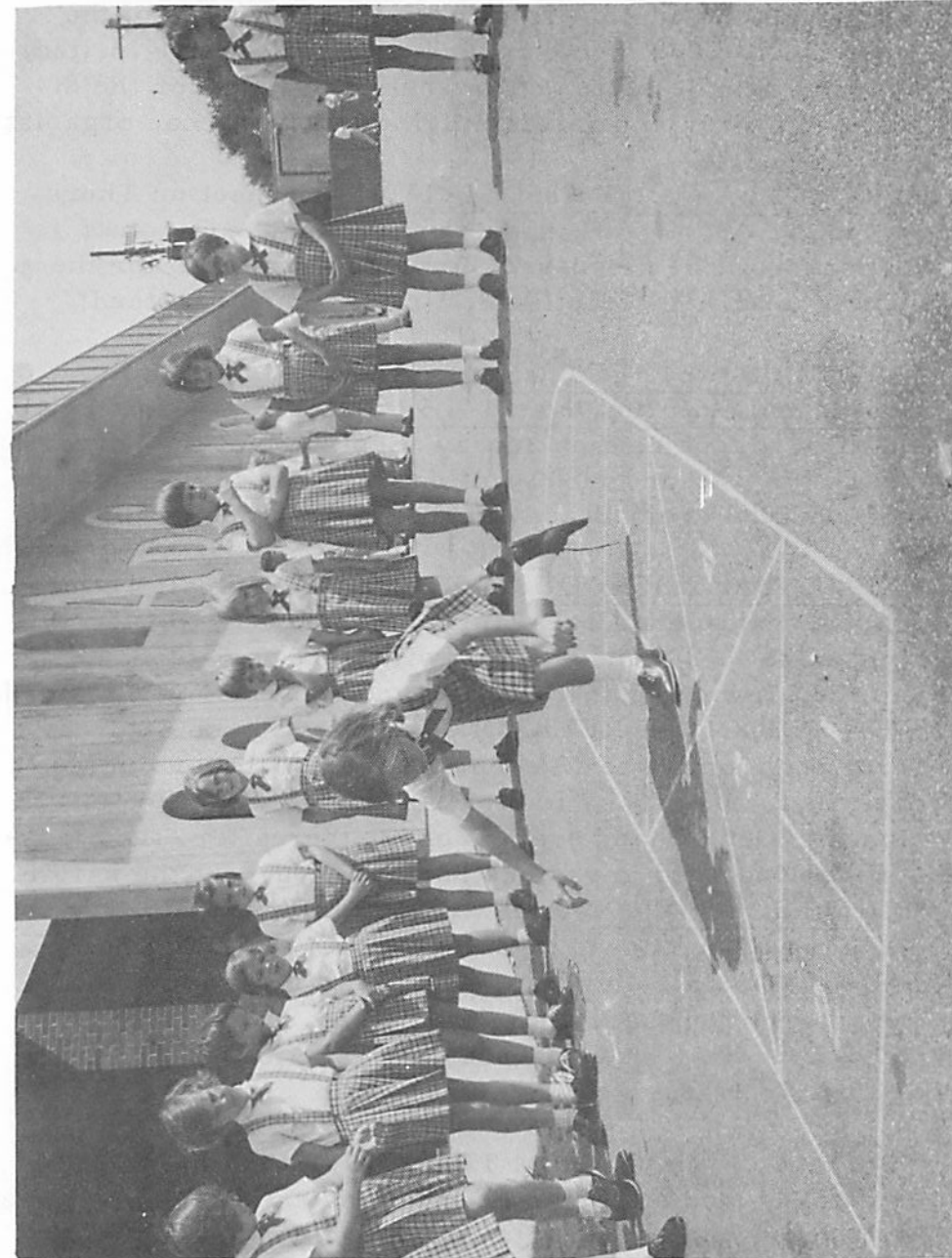
THOUGHT FOR TODAY:

TO SEARCH FOR GOD IS THE SAME AS TO LOVE HIM.



St. Angela Merici

Parish Message



ST. ANGELA MERICI CHURCH

Pastor: Father Joseph Calato
Assistants: Father Jerry Dabria
Father Frank Lipps

Rectory: 900 Beverly Garden Drive
835-0324

Convent: 828 Melody Drive
834-7628

School: 835 Melody Drive
835-8547
Staffed by Ursuline Nuns

Sunday Masses

7:00 A.M.	8:30 A.M.
9:45 A.M.	11:00 A.M.
12:15 P.M.	5:30 P.M.

Nursery service every Sunday during
9:45 and 11:00 A.M. Masses in school
building.

Weekday Masses

6:30 A.M. & 8:30 A.M.

Our Lady of Perpetual Help Novena

Tuesday 7:30 P.M.

Holy Days of Obligation

6:00 A.M.	7:15 A.M.
8:30 A.M.	9:45 A.M.
6:00 P.M.	7:15 P.M.

Confessions

Saturday: 5:00 - 6:00 P.M.
7:00 - 8:00 P.M.

Thursday before First Friday
5:00 - 6:00 P.M.
7:00 - 8:00 P.M.

Baptisms:

Arrangements should be made prior to the
Ceremony. All information should be care-
fully phoned in advance.

Only practicing Catholics can be sponsors.

PARISH MESSAGE
St. Angela Merici Church
900 Beverly Garden Dr.
Metairie, La. 70002

Postmaster: If undeliverable
Form 3579 Requested

Second Class Postage
Paid at
Metairie, La. 70002

Subscription \$1.00

SIXTEENTH SUNDAY AFTER PENTECOST

RELIGIOUS EDUCATION SCHEDULE:

Pre-School Children (ages 4 & 5): Registration on Sunday, Sept. 22, at the nursery before or after the 9:45 and 11:00 am Masses. Class will be conducted during the 9:45 am Mass every Sunday. Of Course, the nursery for the smaller children will continue as usual.

Elementary School Children (grades first thru eighth): Registration on Saturday, Sept. 21, from 10 to 11:30 am. Classes start on Sept. 28, from 9:15 to 10:15 am and continue every Saturday. Book fee, \$5.00 per child.

High School of Religion (grades 9th thru 12th): Registration on Saturday, Sept. 21, from 10 to 12 noon. Classes will start at the annex on Sept. 30th, from 7 to 8 pm. Beginning on Oct. 7th, and every Monday thereafter, classes will be conducted in various homes throughout the parish.

Adult Religion Classes. Information Forum (good for a basic course in Catholicism for Catholics and Non-Catholics), Sacred Scripture, Marriage Enrichment Course (both husband and wife must attend), Study of the Mass, & Parish and Christian Commitment. More info on registration and time schedule will be given later. Persons wishing to know more about the Catholic Church should attend the Information Forum. Those who complete the course could be ready for reception into the Church by Easter.

EXTREME CAUTION & ALERTNESS should be practiced by parents who pickup school children. Notice that some mothers, with children in the car, are the worse offenders!

THE YOUTH ORGANIZATION (MIC) will have a dance on Friday, Sept. 20, from 8 to 11 pm in the annex.

AREA COORDINATORS will have a very important meeting on Thursday, Sept. 26th, at 8 pm in the annex. Our Block Couple System is being completely revised. This meeting is not for the Block Couples. Circle your calendar!

ITEMS OF INTEREST: THE ATTENDANCE AT MASS LAST SUNDAY WAS 4800 . . . 2043 RECEIVED COMMUNION . . . ENVELOPES WERE \$ 3784.00 . . . HOW ABOUT LEARNING TO SQUARE DANCE? ATTEND THE GREENIE NIGHT ON SEPT. 30, AT 8 PM, YOU WILL LOVE IT. ONLY FOR HUSBANDS AND WIVES . . . YOU MEET THE NICEST PEOPLE AT CHURCH, WHY NOT COME A LITTLE EARLY AND CHAT UNDER THE OVER-HANGS - THE SAME AFTER MASS AS SOME SIMPLY MUST LEAVE IN A FRENZY IMMEDIATELY . . . WITH THE NURSERY EVERY SUNDAY, FAMILIES CAN ATTEND MASS TOGETHER . . . ST. ANGELA'S ASSOCIATION (SAMA) WILL SERVE A SPAGHETTI AND MEAT-BALL DINNER IN THE ANNEX ON SUN., OCT. 20 - WE DO HAVE A FEW ITALIAN MEN IN THE PARISH, EVEN THE PASTOR WILL SAMPLE THE GRAVY . . . EVERY ONE CAN BE A SAINT . . . YOU ARE YOUR BROTHER'S KEEPER.

MASS INTENTIONS FOR THE COMING WEEK:

SUNDAY SEPTEMBER 22 - 16TH SUNDAY AFTER PENTECOST

7:00 - ANTHONY PERRE

8:30 - ROSA D. PIRO

9:45 - MISS MARIE CIEUTAT

11:00 - MRS. JEANNE HEITKAMP

12:15 - LOUIS PIERCE, SR.

5:30 PM - FOR THE PARISH

MONDAY SEPTEMBER 23

6:30 - MYRTLE SCHWANK

THURSDAY SEPTEMBER 26

6:30 - MRS. LILLIAN KENNY

8:30 - CHARLES LATORU

8:30 - JAMES CALLAWAY
(25TH ANN. - MR&MRS A. DIERMAYER)

TUESDAY SEPTEMBER 24

6:30 - MR. & MRS. D. BRONZO

FRIDAY SEPTEMBER 27

6:30 - PURGATORIAL LIST

8:30 - ANGELIA RIZZUTO

8:30 - FRANK INCARDONA

WEDNESDAY SEPTEMBER 25

6:30 - MR. & MRS. JOSEPH VIDAL

SATURDAY SEPTEMBER 28

6:30 - CARROL COGNEVICH

8:30 - LOUIS PIERCE, SR.

8:30 - THANKSGIVING

BAPTISMS THIS WEEK:

MARLA FRANCES CHAPOTEL

MICHELE MARIE OWEN

JULIE MARGUERITE TOUPS

BANNS OF MATRIMONY:

GABRIEL GARRIDO &

SHIRLEY LAMBERT (1ST)

JOSEPH GUARISCO, JR. &

ADRIENNE ANN LECHE (2ND)

IN YOUR CHARITY PLEASE PRAY FOR THE SOULS OF MR. HOLBERT A. SCHROEDER AND MR. F. MILTON CARRIERE.

SATURDAY ALTAR LADIES

TEAM NO. 2 WILL CLEAN THE CHURCH THIS SATURDAY.

THOUGHT FOR TODAY:

THE CHEERFUL LOSER IS THE WINNER.

PARISH MESSAGE
St. Angela Merici Church
900 Beverly Garden Dr.
Metairie, La. 70002

ST. ANGELA MERICI CHURCH

Pastor: Father Joseph Calato
Assistants: Father Jerry Dabria
Father Frank Lipps

Rectory: 900 Beverly Garden Drive
835-0324

Convent: 828 Melody Drive
834-7628

School: 835 Melody Drive
835-8547
Staffed by Ursuline Nuns

Sunday Masses

7:00 A.M.	8:30 A.M.
9:45 A.M.	11:00 A.M.
12:15 P.M.	5:30 P.M.

Nursery service every Sunday during
9:45 and 11:00 A.M. Masses in school
building.

Weekday Masses

6:30 A.M. & 8:30 A.M.

Our Lady of Perpetual Help Novena
Tuesday 7:30 P.M.

Holy Days of Obligation

6:00 A.M.	7:15 A.M.
8:30 A.M.	9:45 A.M.
6:00 P.M.	7:15 P.M.

Confessions

Saturday: 5:00 - 6:00 P.M.
7:00 - 8:00 P.M.

Thursday before First Friday
5:00 - 6:00 P.M.
7:00 - 8:00 P.M.

Baptisms:

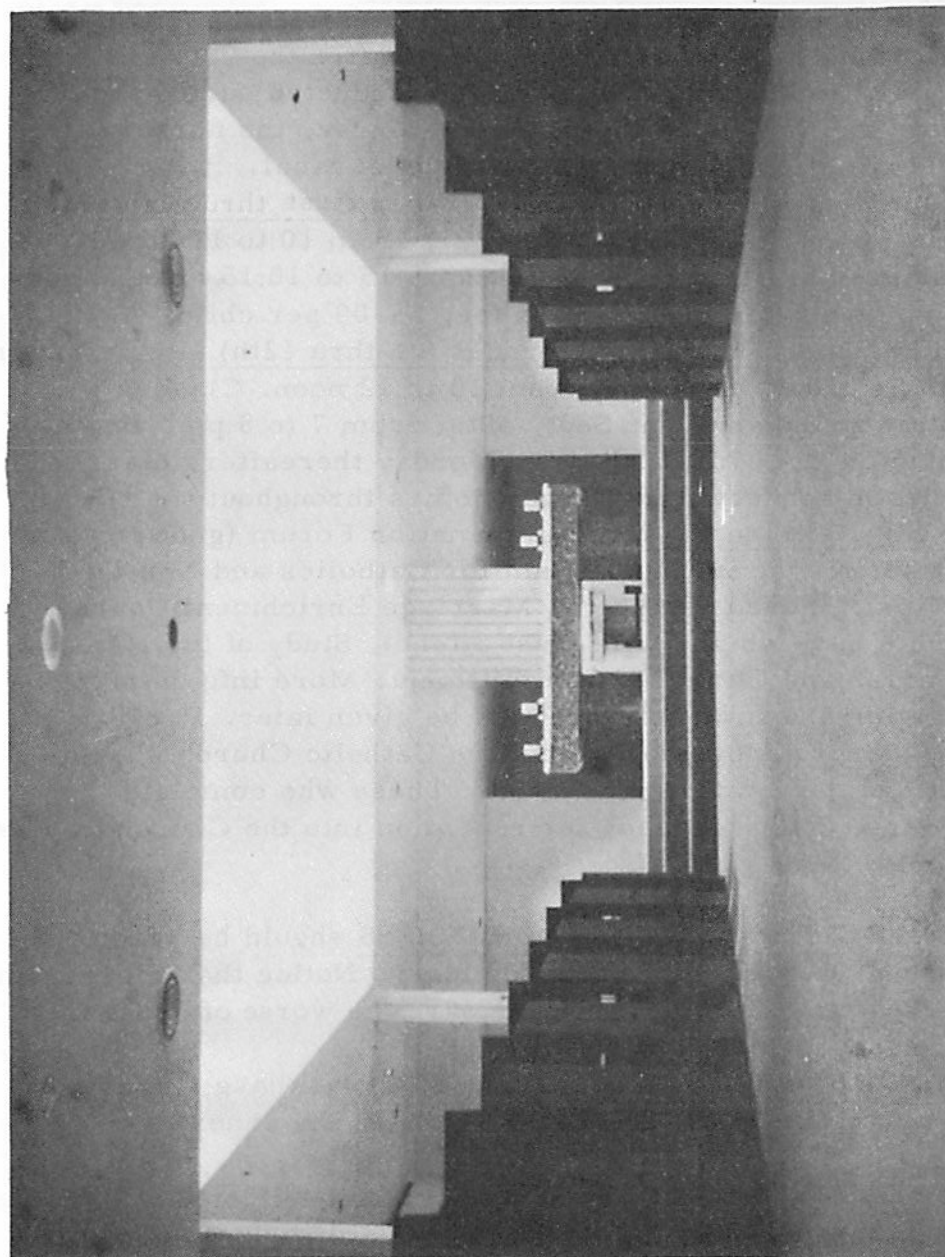
Arrangements should be made prior to the
Ceremony. All information should be care-
fully phoned in advance.

Only practicing Catholics can be sponsors.



St. Angela Merici

Parish Message



SEVENTEENTH SUNDAY AFTER PENTECOST

YOU WILL NEVER BE ABLE TO PRAY unless you have time for God. Prayer develops like a personal friendship. At first there is a constant exchange of ideas, with much background and explanation. After a while, there is less conversation. It is enough to be in each other's presence. So prayer is simply an answering of love or of thanksgiving, a word or a thought of praise, or a request for pardon or help. But it does take some of your time. Do you really take the time?

ELEMENTARY SCHOOL CHILDREN, grades 1 thru 8, begin religion classes on Saturday, Sept. 28, from 9:15 to 10:15. Children should assemble in church.

PRE-SCHOOL RELIGION CLASSES FOR 4 & 5 YR. OLDS begin on Sunday, Sept. 29, during the 9:45 Mass in the annex. The nursery for smaller children will continue during the 9:45 & 11:00 am Masses as usual, in the annex.

HIGH SCHOOL OF RELIGION, grades 9 thru 12, opens on Monday, Sept. 30, from 7 to 8 pm, in the annex. Parents have a serious moral obligation to send their children to these classes. Many students who attended last year have failed to register as yet. Registrations will be held at 7 pm for these.

ADULT CONFIRMATION will be administered at St. Louis Cathedral on Sunday, Oct. 27, at 3 pm. Any adult who wishes to be confirmed should contact the rectory.

ST. ANGELA'S WHEEL 'N DEAL SQ. DANCE CLUB is welcoming new couples on Monday, Sept. 30, at 8 pm, in the annex "where you meet the nicest people".

FROM THE FIRE-CHIEF: "Expect no fire in St. Angela's Church on Sundays during the Masses. Advise parishioners no need to rush out before last hymn".

ITEMS OF INTEREST: THE ATTENDANCE AT MASS LAST SUNDAY WAS 4770 . . . 1961 RECEIVED COMMUNION . . . ENVELOPES WERE \$ 3584.00 . . . FRONT COVER FEATURES "MISS LORRAINE AND HER LITTLE ONES" . . . SALA WILL HAVE JOINT MEETING WITH SAMA ON THURSDAY, OCT. 10, TO PRESENT THE FACULTY OF OUR SCHOOL. MEETING WILL BE IN CHURCH BECAUSE OF THE VERY LARGE CROWD EXPECTED . . . FRIDAY IS THE FIRST FRIDAY OF THE MONTH, WITH CONFESSIONS ON THURSDAY, FROM 5 TO 6 AND 7 TO 8 PM . . . ADULT RELIGIOUS EDUCATION PROGRAM WILL COMMENCE ON WED., OCT. 16, AT 8 PM. REGISTRATION FORMS WILL BE AVAILABLE IN SUFFICIENT TIME . . . ST. ANGELA'S MEN ARE NOW PRACTICING HOW TO ROLL SPAGHETTI FOR THEIR SPAGHETTI AND MEAT BALL DINNER FOR ALL PARISHIONERS ON SUNDAY, OCT. 20 IN OUR ANNEX. . . STILL IN A STATE OF SHOCK OVER HOW FEW HIGH SCHOOL STUDENTS FOR THE RELIGION CLASSES.

MASS INTENTIONS FOR THE COMING WEEK:

SUNDAY SEPTEMBER 29 - 17TH SUNDAY AFTER PENTECOST

7:00 - MRS. ANASTASIA RODRIGUE

9:45 - SPECIAL INTENTION

12:15 - THANKS TO ST. MICHAEL

MONDAY SEPTEMBER 30

6:30 - MR.&MRS. CYRIL LANDRY

8:30 - J. C. ZITO

TUESDAY OCTOBER 1

6:30 - LOUIS J. KARTER

8:30 - JOHN S. ASHER

WEDNESDAY OCTOBER 2

6:30 - CRUCIFIC PISCIOтта

8:30 - EDWIN P. LANKSTON

8:30 - SANDRA LONG

11:00 - D. GIURINTANO & M. FUNCK

5:30 PM - MRS. LIONEL J. BOURGEOIS

THURSDAY OCTOBER 3

6:30 - ANNIE WITTMANN

8:30 - MRS. MARIE GUILBAULT

FRIDAY OCTOBER 4

6:30 - EUGENIE KERNER

8:30 - JOS. MOLYSON & SON

SATURDAY OCTOBER 5

6:30 - EDWIN B. NORRIS

8:30 - JENNIE RIZZUTO

BAPTISMS THIS WEEK:

JODY RAE OSTROWSKI

DONNA MICHELLE PICOU

ANGELA MARGARET POLLOCK

MICHELLE MARIE SOLAR

BANNS OF MATRIMONY:

RONALD D. IANAZZO
GABRIEL GARRIDO
JOSEPH GUARISCO, JR.

&
&
&

JUDITH MARIE BENSEL (1 ST)
SHIRLEY LAMBERT (2 ND)
ADRIENNE ANN LECHE (3 RD)

SATURDAY ALTAR LADIES

TEAM NO. 3 WILL CLEAN THE CHURCH THIS SATURDAY.

THOUGHT FOR TODAY:

THERE'S MORE JOY IN BEING A WINNER THAN A CHEERFUL LOSER.

PARISH MESSAGE
St. Angela Merici Church
900 Beverly Garden Dr.
Metairie, La. 70002

ST. ANGELA MERICI CHURCH

Pastor: Father Joseph Calato
Assistants: Father Jerry Dabria
Father Frank Lipps

Rectory: 900 Beverly Garden Drive
835-0324

Convent: 828 Melody Drive
834-7628

School: 835 Melody Drive
835-8547
Staffed by Ursuline Nuns

Sunday Masses

7:00 A.M.	8:30 A.M.
9:45 A.M.	11:00 A.M.
12:15 P.M.	5:30 P.M.

Nursery service every Sunday during
9:45 and 11:00 A.M. Masses in school
building.

Weekday Masses

6:30 A.M. & 8:30 A.M.

Our Lady of Perpetual Help Novena
Tuesday 7:30 P.M.

Holy Days of Obligation

6:00 A.M.	7:15 A.M.
8:30 A.M.	9:45 A.M.
6:00 P.M.	7:15 P.M.

Confessions

Saturday: 5:00 — 6:00 P.M.
7:00 — 8:00 P.M.

Thursday before First Friday
5:00 — 6:00 P.M.
7:00 — 8:00 P.M.

Baptisms:

Arrangements should be made prior to the
Ceremony. All information should be care-
fully phoned in advance.

Only practicing Catholics can be sponsors.



St. Angela Merici

Parish Message



Second Class Postage
Paid at
Metairie, La. 70002